



嘉和

# 高效耐腐耐磨泵

High Efficiency Corrosion Resistant And Wear-Resistant Pump

昆明嘉和科技股份有限公司

KUNMING JIAHE SCIENCE & TECHNOLOGY CO.,LTD



## 公司概况

### COMPANY OVERVIEW

昆明嘉和科技股份有限公司总部位于中国（云南）自由贸易试验区，国内先进的特种工业泵系统解决方案提供商，深耕特泵行业近 30 年，服务硫磷化工、有色冶炼、石油化工和煤化工等领域，为客户提供具有国内领先水平的高端装备。

公司以做中国最优秀的特泵提供商为主体，工业服务整体解决方案和工业节能整体解决方案为两翼，形成定制化高效智能泵、智慧节能和智慧运维三大核心业务板块。公司结合全球高端泵领先技术，不断优化产品结构，提升产品品质，在实现“以国代进”的同时，与欧洲、北美洲、南美洲、非洲、南亚东南亚等 30 多个国家及地区建立良好的合作关系。我们始终践行“以卓越的技术和服务参与建设更美好的世界”的使命，创建祥和、共赢的百年嘉和！

Kunming Jiahe Science & Technology Co.,Ltd.headquartered in the China (Yunnan) Pilot Free Trade Zone, is an advanced provider of systematic solutions for special industrial pumps in China. It has been deeply engaged in the special pump industry for nearly 30 years, serving the fields of sulfur and phosphorus chemical industry, nonferrous metallurgy, petrochemical industry, and coal chemical industry, providing customers with state-of-the-art equipment.

The company focuses on being the most excellent pump provider in China, with integrated industrial service solutions and integrated industrial energy conservation solutions as its two wings, forming three core business segments: customized efficient intelligent pumps, intelligent energy conservation, and intelligent operation and maintenance. Combining the leading technology of global high-end pumps, the company continuously optimizes its product structure and improves product quality. While realizing the goal of "Replacing imports with domestic products", it has established good cooperative relationships with more than 30 countries and regions in Europe, North America, South America, Africa, South Asia and Southeast Asia. We always practice the mission of "participating in building a better world with excellent technology and services", and create a harmonious and win-win century of Jiahe!





## 产品概述

### PRODUCT OVERVIEW

为深入贯彻落实国家“碳达峰、碳中和”发展战略，公司吸收用户及行业专家在磷化工、有色冶炼行业的应用经验，以工业互联网赋能设备管理和节能减碳，应用西门子研发软件，联合浙江理工大学等高校进行 CFD 流体分析仿真，采用高效固液两相流体输送技术、智能传感技术研发新一代 JFZ 高效智能耐腐蚀耐磨蚀泵，执行 API 610 标准，为用户实现以下价值：

In order to deeply implement the national development strategy of "carbon peak, carbon neutral", the company has absorbed the application experience of users and industry experts in the nonferrous phosphorus chemical and smelting industry, and has used industrial Internet to enable equipment management and energy conservation and carbon reduction. It has applied Siemens research and development software, conducted CFD fluid analysis and simulation in collaboration with Zhejiang University of Technology and other universities, and developed a new generation of JFZ high-efficiency intelligent corrosion resistant and wear-resistant pump, using efficient solid-liquid two-phase fluid transportation technology and intelligent sensor technology, implementing API 610 standards, and achieving the following value for users:

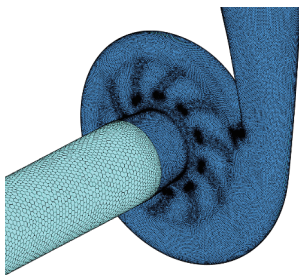
#### 1) 节能减碳

利用新设计理念，进行了节能技术开发，结构优化，材质提升，全新制造工艺保证产品的高效性，相比同等流量扬程产品，在现有装置节电率至少是 10% 以上，部分可达到 50%。

#### Energy conservation and carbon reduction

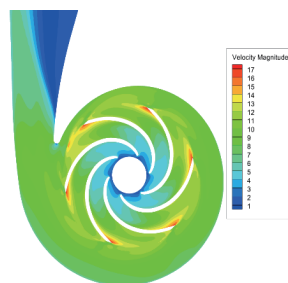
The use of new design concepts, energy-saving technology development, structural optimization, material upgrading of new manufacturing processes to ensure the efficiency of the product, compared with the same flow head products, in the existing device power saving rate of at least 10%, part of which can reach 50%.

**定制化水力设计、CFD 仿真分析、精密铸造确保高效率**  
Customized hydraulic design, CFD simulation analysis, precision casting to ensure high efficiency



CFD 水力模型及网格划分

CFD hydraulic model and grid generation



速度云图

Velocity contour



叶轮精密铸造

Impeller precision casting



## 2) 智能化升级, 长周期运行

配备智能无线传感器, 通过智能无线传感技术, 对设备运行数据集成、建模分析, 利用物联网和云计算等大数据技术应用, 掌握设备运行健康状况, 实现在线监测, 智能预警, 精准诊断, 为客户提供创新的设备预知性维护解决方案, 降低设备运维成本、降低设备运行非计划停机损失, 延长轴承寿命, 实现产品智能化升级, 保障设备更长周期运行。

### Intelligent upgrade and long cycle operation

Equipped with intelligent wireless sensors, intelligent wireless sensor technology is used to integrate, model, and analyze equipment operation data, and use big data technology applications such as the Internet of Things and cloud computing to master the health status of equipment operation, achieve online monitoring, intelligent early warning, and accurate diagnosis. It provides customers with innovative equipment predictive maintenance solutions, reduces equipment operation and maintenance costs, reduces unplanned downtime losses during equipment operation, extends bearing life, and achieve intelligent product upgrade to ensure longer cycle operation of equipment.



无线采集

Wireless acquisition



多平台互联监测

Multi-platform interconnection monitoring

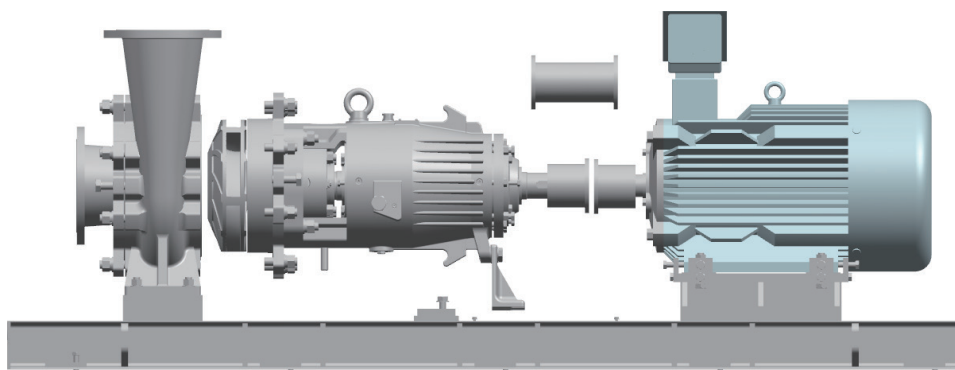


### 3) 维修便利

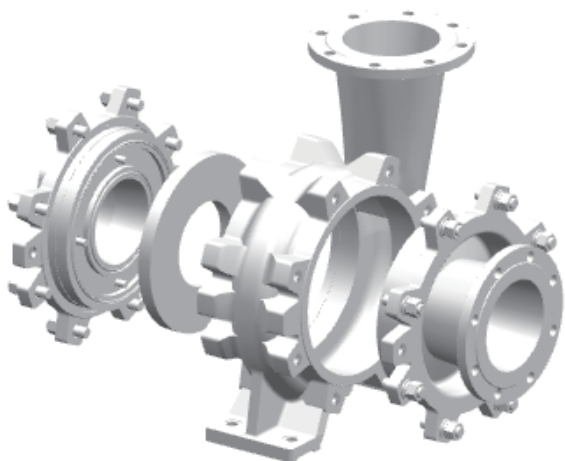
泵体底脚支撑，加长膜片联轴器，维修转子部件无需拆卸管路和电机；前、后泵盖设计降低泵体维修成本，方便更换过流件；后泵盖带耐磨板降低泵盖维修成本，轴承稀油润滑恒位油杯补油，可视添加或更换润滑油。

#### Convenient maintenance

Pump body foot support, extended diaphragm coupling, maintenance of rotor components without the need to disassemble the pipeline and motor; The front and rear pump covers are designed to reduce the maintenance cost of the pump body and facilitate the replacement of flow passage parts; The rear pump cover is equipped with a wear-resistant plate to reduce the maintenance cost of the pump cover. The bearing thin oil lubricates the constant position oil cup and replenishes the oil, visual addition or replacement of lubricating oil.



维修转子部件不需要拆卸管路和电机  
Repairing rotor components does not require the removal of pipes and motors



分体式壳体设计降低泵体维修成本和方便更换过流件  
The split housing design reduces pump maintenance costs and facilitates the replacement of flow passage components



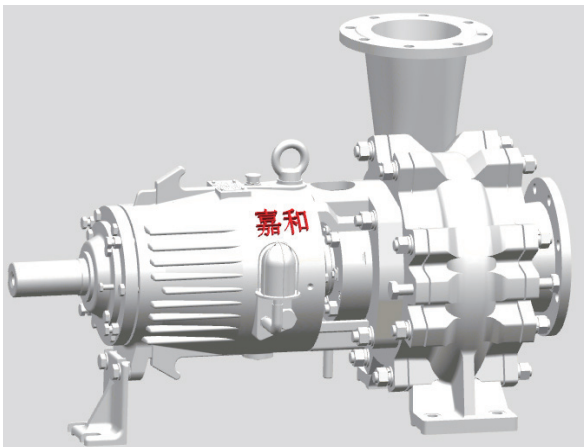
## 性能表

### PERFORMANCE TABLE

泵型号 Pump Model	流量 Flow(m <sup>3</sup> /h)	扬程 Head(m)	配套电机功率 Auxiliary Motor Power(kW)
JFZ(N)32-S/L/M	7 ~ 23	20 ~ 50	3 ~ 11
JFZ(N)40- S/L/M	7 ~ 34	18 ~ 80	3 ~ 30
JFZ(N)50- S/L/M	10 ~ 77	10 ~ 78	3 ~ 37
JFZ(N)65- S/L/M	27 ~ 121	22 ~ 79	4 ~ 55
JFZ(N)80- S/L/M	85 ~ 187	70 ~ 156	55 ~ 160
JFZ(N)100- S/L/M	60 ~ 275	20 ~ 57	7.5 ~ 75
JFZ(N)125-S/L/M	175 ~ 407	35 ~ 83	45 ~ 160
JFZ(N)150- S/L/M	100 ~ 330	20 ~ 156	18.5 ~ 160
JFZ(N)200- S/L/M	235 ~ 605	20 ~ 65	30 ~ 200
JFZ(N)250- S/L/M	400 ~ 880	35 ~ 61	110 ~ 250
JFZ(N)300- S/L/M	400 ~ 1980	20 ~ 50	75 ~ 500

## 型号说明

### MODEL DESCRIPTION



### JFZ(N) 65-S/L/M

规格型号  
Specification and model

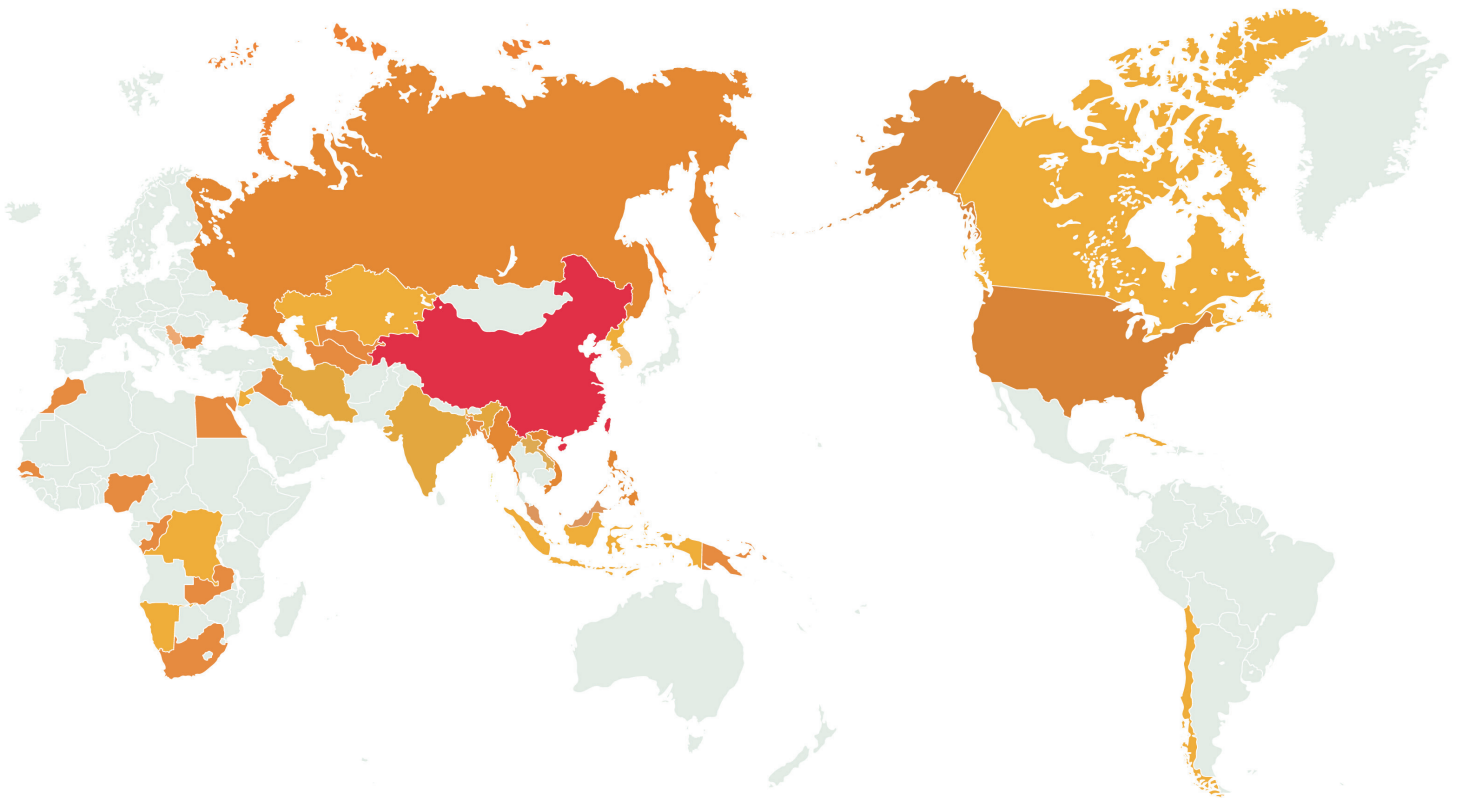
泵出口直径(mm)  
Pump outlet diameter(mm)

嘉和新一代高效耐腐耐磨泵  
Jiahe new generation high efficiency  
corrosion and wear resistant pump



## 市场与服务

MARKET&SERVICE



- ◆ 中国 CHINA
- ◆ 印度尼西亚 INDONESIA
- ◆ 越南 VIET NAM
- ◆ 老挝 LAOS
- ◆ 伊朗 IRAN
- ◆ 土库曼斯坦 TURKMENISTAN
- ◆ 伊拉克 IRAQ
- ◆ 刚果(金) CONGO(KINSHASA)
- ◆ 尼日利亚 NIGERIA
- ◆ 约旦 JORDAN
- ◆ 美国 AMERICA
- ◆ 俄罗斯 RUSSIA
- ◆ 孟加拉 BENGAL
- ◆ 菲律宾 PHILIPPINES
- ◆ 韩国 SOUTH KOREA
- ◆ 乌兹别克斯坦 UZBEKISTAN
- ◆ 印度 INDIA
- ◆ 南非 SOUTH AFRICA
- ◆ 纳米比亚 NAMIBIA
- ◆ 塞内加尔 SENEGAL
- ◆ 保加利亚 BULGARIA
- ◆ 古巴 CUBA
- ◆ 马来西亚 MALAYSIA
- ◆ 巴布亚新几内亚 PAPUANEWGUINEA
- ◆ 缅甸 BURMA
- ◆ 朝鲜 KOREA
- ◆ 哈萨克斯坦 KAZAKHSTAN
- ◆ 埃及 EGYPT
- ◆ 刚果 CONGO
- ◆ 赞比亚 ZAMBIA
- ◆ 摩洛哥 MOROCCO
- ◆ 加拿大 CANADA
- ◆ 智利 CHILE



嘉和

以卓越的技术和服务参与建设更美好的世界

Participate in Building a Better World with Excellent Technology and Services



☎ 0871-67413111 65638866

🌐 [www.jhpumps.com](http://www.jhpumps.com)

📍 中国（云南）自由贸易试验区昆明片区经开区拓翔路 208 号  
No. 208 Tuoxiang Road, Economic Development Zone,  
Kunming Area, China (Yunnan) Pilot Free Trade Zone