



嘉和

# 煤化工用泵

PUMPS FOR COAL CHEMICAL INDUSTRY

昆明嘉和科技股份有限公司

KUNMING JIAHE SCIENCE & TECHNOLOGY CO.,LTD

## 企业概况 COMPANY OVERVIEW

昆明嘉和科技股份有限公司总部位于中国（云南）自由贸易试验区，是国内先进的特种工业泵系统解决方案提供商，国家专精特新小巨人企业、国家高新技术企业、工信部服务型制造示范项目和工业互联网试点示范项目企业，深耕特泵行业近30年，服务硫磷化工、石油化工、有色冶炼、煤化工等领域，为客户提供具有国内领先水平的高端泵类装备。

公司以做中国最优秀的特泵提供商为主体，工业服务整体解决方案和工业节能整体解决方案为两翼，形成定制化高效智能泵、智慧节能和智慧运维三大核心业务板块。公司结合全球高端泵领先技术，不断优化产品结构，提升产品品质，在实现“以国代进”的同时，与欧洲、北美洲、南美洲、非洲、南亚、东南亚等30多个国家及地区建立良好的合作关系。我们始终践行“以卓越的技术和服务参与建设更美好的世界”的使命，创建祥和、共赢的百年嘉和！

Kunming Jiahe Science & Technology Co.,Ltd. headquartered in China (Yunnan) Pilot Free Trade Zone, is an advanced solution provider for special industrial pump systems in China, a national specialized and New Small Giant Enterprise, a National High-tech Enterprise, a service-oriented manufacturing demonstration project of the Ministry of Industry and Information Technology and a pilot demonstration project of Industrial Internet. It has been deeply involved in the special pump industry for nearly 30 years, serving petrochemical, coal chemical, fine chemical, sulfur and phosphorus chemical, nonferrous smelting, provide customers with domestically leading high-end pump equipment. The company focuses on being the best pump provider in China, with integrated industrial service solutions and integrated industrial energy conservation solutions as its two wings, forming three core business segments: customized efficient intelligent pumps, intelligent energy conservation, and intelligent operation and maintenance. Combining the leading technology of global high-end pumps, the company continuously optimizes its product structure and improves product quality. While realizing the goal of “Replacing imports with domestic products”, it has established good cooperative relationships with more than 30 countries and regions in Europe, North America, South America, Africa, South Asia, and Southeast Asia. We always practice the mission of “Participating in Building a Better World with Excellent Technology and Service”, and create a harmonious and win-win century of Jiahe!



“

**企业使命：以卓越的技术和服务参与建设更美好的世界**

Enterprise Mission: Participate in Building a Better World with Excellent Technology and Service

**愿景：创建祥和共赢的百年嘉和**

Vision: Create a Harmonious and Win-Win Century of Jiahe

”

# 目录 CONTENTS

应用领域矩阵THE APPLICATION AREA MATRIX	01
OH1-JHA/JHAO	03
OH2-OHF	04
OH2-JHE/JHF/OHA	05
OH2-JXL	06
OH1/OH2-JFZ(F)/JFZ(C)	07
JHFZ/OH3-JHFZ-V	08
BB1-JAS	09
BB2-JHCD	10
BB2-JHBB/JHBD	11
BB3-JHDK/JHDK-D	12
BB4-JHD	13
BB5-JHDT	14
VS4-JHB	15
VS4-JHY	16
VS5-JLF/JLZ	17
VS6-JHDL	18

# 应用领域矩阵 THE APPLICATION AREA MATRIX

结构形式 Structure Form	产品系列 Product Series	煤化工 Coal Chemical	精细化工 Fine Chemicals	石油化工 Petrochemicals	硫磷化工 Sulfur Phosphorus Chemical	有色冶炼 Non-ferrous Smelting	电站、水处理 Power Stations, Water Treatment
OH1	JHA/JHAO	●	●	●	●	●	●
	JFZ(F)	●	●	●	●	●	●
OH2	OHA/JHE/JHF	●	●	●	●	●	●
	JXL	●	●	●	●	●	●
	JFZ(C)	●	●	●	●	●	
	OHF	●					
	JHFZ	●		●	●	●	
OH3	JHFZ-V	●		●	●	●	
BB1	JASS	●		●	●	●	●
	JASL	●		●	●	●	●
BB2	JHBB	●	●	●			
	JHBD	●	●	●			
	JHCD	●	●	●			
BB3	JHDK	●		●			●
	JHDK-D	●		●			●
BB4	JHD	●	●	●	●	●	●
BB5	JHDT	●		●		●	●
VS4	JHB/JHY	●	●	●	●	●	
VS5	JLF/JLZ	●	●	●	●	●	●
VS6	JHDL	●	●	●			

# || 煤化工产品

COAL CHEMICAL PRODUCT





# OH1-JHA/JHAO 底脚安装单级悬臂流程泵

OH1-JHA/JHAO FOOT INSTALLATION SINGLE STAGE  
CANTILEVER PROCESS PUMP

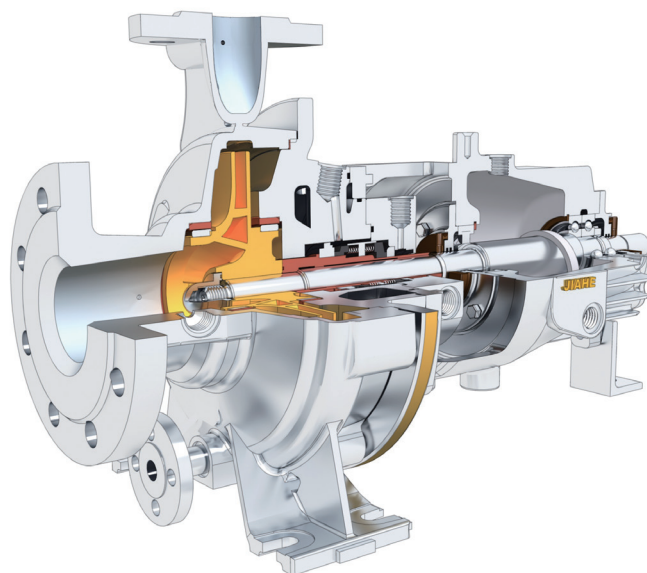
JHA/JHAO系列为单级、单吸、径向剖分、底脚安装、悬臂式离心泵，符合API610-10<sup>th</sup>。JHA为闭式叶轮，JHAO为半开式叶轮。闭式叶轮具有良好的抗气蚀性能，效率高；半开式叶轮适用于输送含颗粒、易结晶、浆液类介质。

JHA/JHAO series are single-stage, single suction, radial split, foot-mounted, cantilever centrifugal pump. Complying with API610-10<sup>th</sup>. JHA is a closed impeller, while JHAO is a semi-open impeller. A closed impeller has good anti cavitation performance and high efficiency; Semi-open impeller is suitable for transferring media containing particles and easily crystallized slurries.

## 性能范围

Performance Range

口径 (Diameter) : 25~ 400mm  
 流量 (Flow) : ~2600m<sup>3</sup>/h  
 扬程 (Head) : ~300m  
 温度 (Temperature) : -80°C ~ 300°C  
 压力 (Pressure) : 2.5MPa



## 应用范围

Application Scope

适于输送各种清洁或含有少量颗粒、低温或高温、中压或高压、中性或有腐蚀性的介质。

用于炼油厂、石油化工、乙烯装置、低温工程、煤化工、精细化工等领域。

Suitable for transferring various clean or containing small amounts of particles, low or high temperature, medium or high pressure, neutral or corrosive media.

Applied in fields such as refineries, petrochemical industry, ethylene plants, low-temperature engineering, coal chemical industry, fine chemical industry, etc.



## OH2-OHF 激冷水泵、锁斗循环泵

OH2-OHF RADICAL COOLING WATER PUMP, LOCK  
BUCKET CIRCULATION PUMP

OHF系列泵为卧式单级、双吸、径向剖分、中心线安装、悬臂式离心泵，符合ISO13709/API610标准。该系列泵叶轮为双吸结构，自平衡轴向力，拥有良好的抗汽蚀性能，两侧交错叶片，减小脉冲；泵体中心线支撑壁厚加厚设计能承受更大工作压力，提供可更换的壳体密封环及叶轮密封环。水力设计采用CFD仿真优化，过流部件选用优质耐磨耐腐蚀材料，具有高效率、高可靠性等优势。

OHF series pumps are horizontal single-stage, double-suction, radially split, centerline-mounted, cantilevered centrifugal pumps in accordance with ISO13709/API610 standards. The impeller of this series pump is double suction structure, self-balancing axial force, with good anti-cavitation performance, staggered vanes on both sides to reduce the pulse; pump body centerline support wall thickening design can withstand greater working pressure, provide replaceable shell sealing ring and impeller sealing ring. The hydraulic design is optimized by CFD simulation, and the over-flow parts are made of high-quality wear-resistant and corrosion-resistant materials, which has the advantages of high efficiency and high reliability.

### 性能范围

#### Performance Range

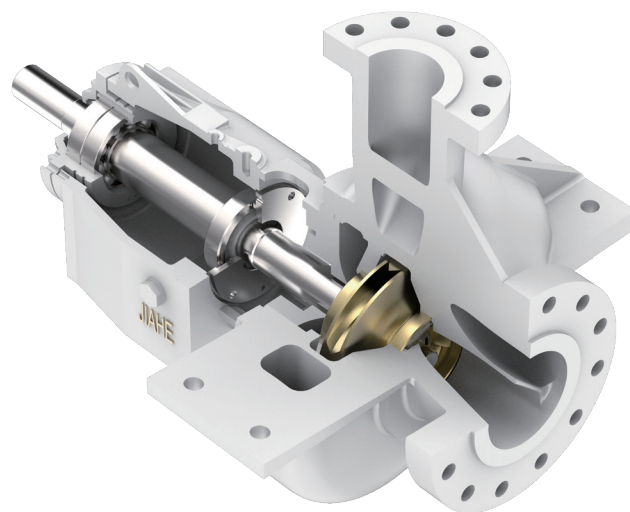
口径 (Diameter) : 25~300mm

流量 (Flow) : ~800m<sup>3</sup>/h

扬程 (Head) : ~180m

压力 (Pressure) : ~15MPa

温度 (Temperature) : ~420°C



### 应用范围

#### Application Scope

适用于输送高温、高压、重载、磨蚀、腐蚀、含固0.5%~5%、清洁、有一定气体的工况介质，进口压力较大的工况，常用作高温油浆泵、高压水煤浆泵、高压循环煤气水泵、激冷水泵、黑水循环泵、锁斗泵、渣池泵等。

Suitable for conveying high temperature, high pressure, heavy load, abrasion, corrosion, containing solid 0.5% -5%, clean, there are certain gases of the working conditions of the media, the inlet pressure is larger conditions, commonly used as high temperature oil slurry pumps, high-pressure coal slurry pumps, high-pressure circulating gas pumps, pumps, black water circulation pumps, locking bucket pumps, slag pool pumps, and so on.



# OH2-JHE/JHF/OHA 中心线安装单级悬臂流程泵

OH2-JHE/JHF CENTERLINE INSTALLATION OF SINGLE STAGE  
CANTILEVER PROCESS PUMP

JHE/JHF/OHA系列为单级、单吸、径向剖分、中心线安装、悬臂式离心泵。JHE/JHF系列符合API610-10<sup>th</sup>及DIN/ISO/VDMA24927标准的要求；OHA系列符合API610-11<sup>th</sup>标准，优化设计性能及结构满足轻重各工位需求，模块化设计提高泵的互换性。

JHE/JHF/OHA series is a single-stage, single suction, radial split, centerline mounted, cantilever centrifugal pump. JHE/JHF series meets the requirements of API610-10<sup>th</sup> and DIN/ISO/VDMA24927 standards; OHA series meets the API610-11<sup>th</sup> standard, with optimized performance and structure to meet the requirements of light and heavy-duty stations. The modular design improves the interchangeability of the pump.

## 性能范围

Performance Range

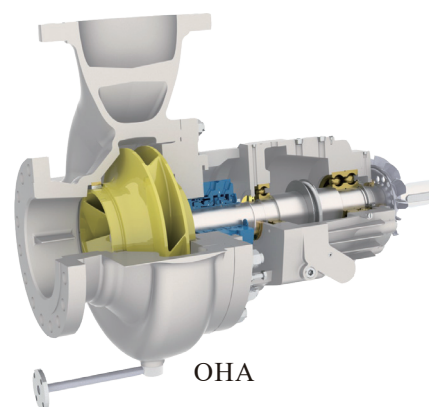
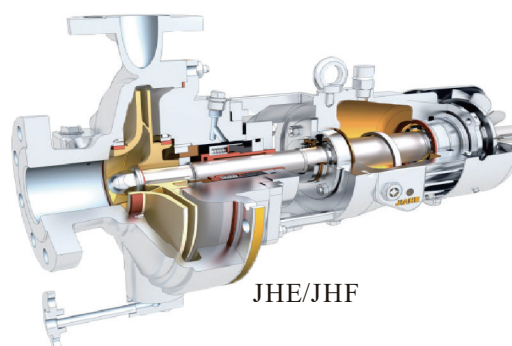
口径 (Diameter) : 25~ 400mm

流量 (Flow) : ~2600m<sup>3</sup>/h

扬程 (Head) : ~300m

温度 (Temperature) : -80°C ~ 450°C

压力 (Pressure) : JHE/OHA: 5.0MPa JHF: 7.5MPa



## 应用范围

Application Scope

适于输送各种清洁或含有少量颗粒、低温或高温、中压或高压、中性或有腐蚀性的介质。

用于炼油厂、石油化工、乙烯装置、低温工程、煤化工、精细化工等领域。

Suitable for transferring various clean or containing small amounts of particles, low or high temperature, medium or high pressure, neutral or corrosive media.

Applied in fields such as refineries, petrochemical, ethylene plants, low-temperature engineering, coal chemical, and fine chemical industries.



## OH2-JXL 小流量化工流程泵

OH2-JXL SMALL FLOW CHEMICAL  
PROCESS PUMP

JXL系列小流量化工流程泵为单级、单吸、径向剖分蜗壳泵，后开门式设计提高了维修便利性，具有高效节能、抗汽蚀性能好、通用化程度高、结构简单、维护方便和运行成本低的特点。

JXL series small flow chemical process pumps are single-stage, single-suction, radially dissected worm shell pumps with back-door design to improve maintenance convenience, featuring high energy efficiency, good anti-cavitation performance, high degree of generalization, simple structure, easy maintenance and low operating costs.

### 性能范围

#### Performance Range

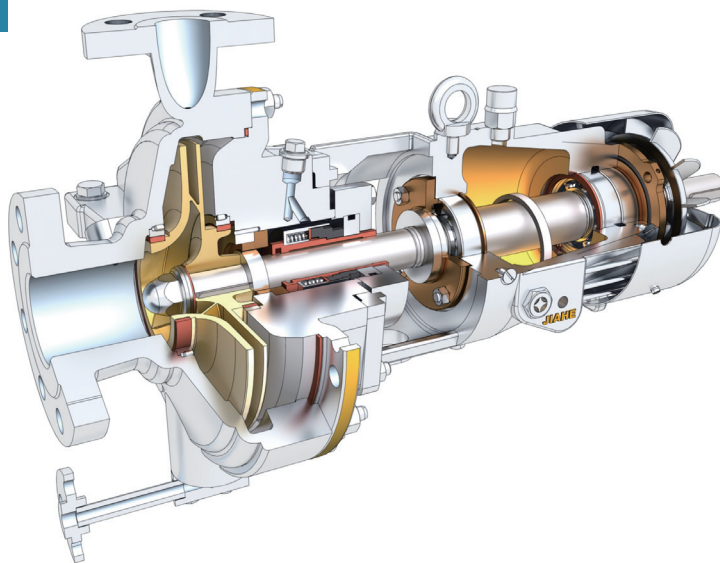
口径 (Diameter) : 15~40mm

流量 (Flow) : 0.3~12.5m<sup>3</sup>/h

扬程 (Head) : 12~125m

温度 (Temperature) : -80~450°C

压力 (Pressure) : ~2.5MPa



### 应用范围

#### Application Scope

适于输送各种清洁或含有少量颗粒、低温或高温、中压或高压、中性或有腐蚀性的介质。

用于炼油厂、石油化工、乙烯装置、低温工程、煤化工、精细化工等领域。

Suitable for transferring various clean or containing small amounts of particles, low or high temperature, medium or high pressure, neutral or corrosive media.

Applied in fields such as refineries, petrochemical, ethylene plants, low-temperature engineering, coal chemical, and fine chemical industries.



# OH1/OH2-JFZ(F)/JFZ(C) 灰水处理用泵

OH1/OH2-JFZ(F)/JFZ(C) PUMP FOR  
GREY WATER TREATMENT

JFZ(F)/JFZ(C)系列为卧式、单级、单吸、径向剖分、底脚支承/中心支承、悬臂式离心泵，符合API610-10<sup>th</sup>标准OH1/OH2泵型，根据两相流理论和石油化工装置耐腐蚀、耐磨蚀工况实践经验设计，可输送介质含固量达65%。

JFZ (F)/JFZ (C) series are horizontal, single-stage, single suction, radial split, foot support/center support, and cantilever centrifugal pumps that comply with API610-10<sup>th</sup> standard OH1/OH2 pump types. Based on the two-phase flow theory and practical experience of the petrochemical plant in corrosion and abrasion-resistant working conditions of petrochemical plants, the solid content of the transportable medium can reach 65%.

## 性能范围

### Performance Range

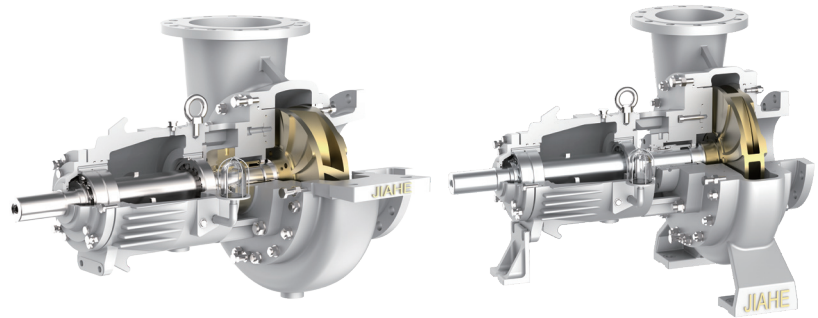
口径 (Diameter) : 25~ 1000mm

流量 (Flow) : 5~15000m<sup>3</sup>/h

扬程 (Head) : 10~150m

温度 (Temperature) : ~120℃

压力 (Pressure) : ~5.0MPa



JFZ(C)

JFZ(F)

## 应用范围

### Application Scope

适合输送固体浓度≤60%各种酸性、中性、碱性的腐蚀、磨蚀性浆液介质。用于煤化工灰水处理单元中的渣池泵、沉降槽给料泵、沉降槽底流泵、滤液输送泵、酸浆排放给料泵、细渣浆排出泵、预热水泵等。也适用于脱硫单元中的石灰石浆液泵、排浆液、滤饼、滤布冲洗水泵等。

Suitable for conveying all kinds of acidic, neutral and alkaline corrosive and abrasive slurry media with solid concentration ≤ 60%. It is used for slag pond pump, settling tank feed pump, settling tank underflow pump, filtrate transfer pump, acid slurry discharge feed pump, fine slurry discharge pump, preheating water pump, etc. in coal chemical gray water treatment unit. It is also applicable to limestone slurry pump, slurry discharge, filter cake, filter cloth rinsing water pump in desulfurization unit.



# JHFZ/OH3-JHFZ-V 低压煤浆泵

JHFZ/OH3-JHFZ-V LOW PRESSURE COAL SLURRY PUMP

JHFZ/JHFZ-V系列泵是单级、单吸离心泵，有卧式和立式两种结构，符合 ISO13709/API610 标准。具有通过能力强、效率高、长周期运行等优点，可替代目前市场上在用的低压隔膜煤浆泵或其它金属离心泵，泵机组效率提高 25%以上。

JHFZ/JHFZ-V series pumps are single-stage, single-suction centrifugal pumps, with horizontal and vertical structures, conforming to ISO13709/API610 standard. It has the advantages of strong passing capacity, high efficiency and long term operation, etc. It can replace the low pressure diaphragm coal slurry pump or other metal centrifugal pump in the market at present, and the efficiency of the pump unit is increased by more than 25%.

## 性能范围

Performance Range

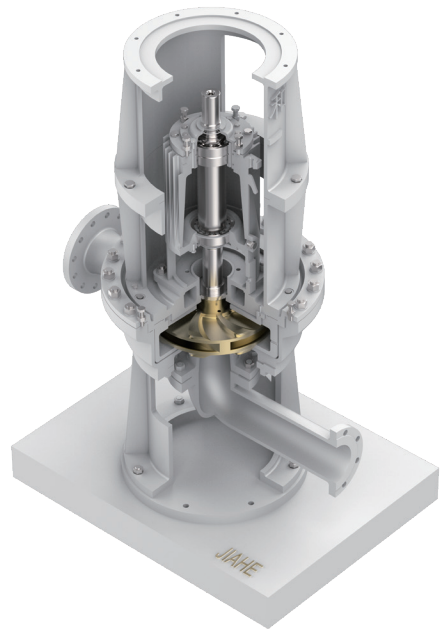
口径 (Diameter) : 40~200mm

流量 (Flow) : ~500m<sup>3</sup>/h

扬程 (Head) : ~120m

压力 (Pressure) : ~2.5MPa

温度 (Temperature) : ~80°C



## 应用范围

Application Scope

适合输送粘度 ≤ 3000mPa.s，含固量在 58 ~ 65% 的磨蚀、腐蚀性低压水煤浆。

用于磨煤机至大煤浆槽的水煤浆输送工位。

It is suitable for transferring abrasive and corrosive low-pressure water-coal slurry with viscosity ≤ 3000mPa.s and solids content of 58~65%.

It is used in the water-coal slurry transferring station from the coal mill to the large slurry tank.



## BB1-JAS 单级双吸轴向剖分两端支承离心泵

BB1-JAS SINGLE-STAGE DOUBLE-SUCTION AXIALLY SPLIT DOUBLE-END SUPPORTED CENTRIFUGAL PUMP

JAS为单级、双吸、轴向剖分、两端底脚支撑卧式离心泵，产品设计符合GB/T5656-2008标准，满足欧盟2009/EC及GB/T13007-2011能效标准。JAS泵满足当前及未来需求的高效率和抽取性能，且更加耐用、寿命更长、更易维护，与国家标准GB19762-2007《清水离心泵能效限定值及节能评价值》节能效果对比，泵效率平均高出3%。

JAS refers to single-stage, double-entry, axially-split, foot support at both ends horizontal centrifugal pump. Its design concept complies with the GB/T5656-2008 standard and meets both the EU 2009/EC and GB/T13007-2011 energy efficiency standards. JAS Pump could not only satisfy the demands in high efficiency and extracting performance, but it is also more durable and easy to maintain. In contrast with the performance of energy saving, JAS Pump has average 3% higher on the pump efficiency performance than the national standard GB 19762-2007 *Energy Efficiency Limits and Energy Saving Evaluation for Clear Water Centrifugal Pumps*.

### 性能范围

Performance Range

型号 (Model) : JASS/JASL

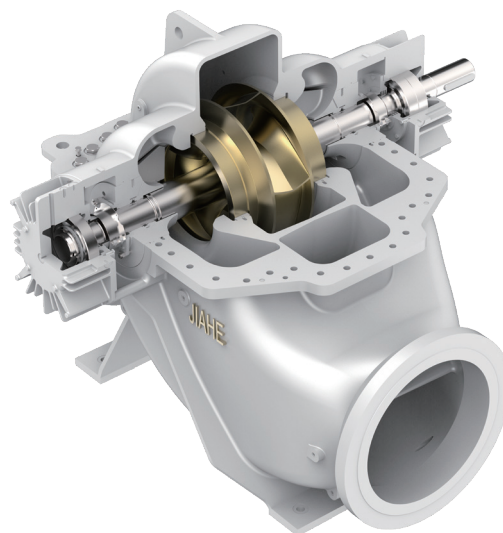
口径 (Diameter) : 150~1000mm

流量 (Flow) : 150~25000m<sup>3</sup>/h

扬程 (Head) : 10~260mm

温度 (Temperature) : -30℃~140℃

压力 (Pressure) : JASS: 2.5MPa JASL: 3.5MPa



### 应用范围

Application Scope

适于供水及水处理、工业水循环、电站、热电厂及管网加热、工业系统中冷热水的分配。

用于采用反渗透法及多效蒸馏法进行水处理厂的淡化系统，满足那些需要高效轴向剖分双吸泵的场合的灭火、灌溉以及排水要求。

Suitable for water supply and treatment, industrial water circulation, power station, thermal power plant and pipe network heating, distribution of hot and cold water in industrial systems.

It is used in desalination systems of water treatment plants by reverse osmosis and multi-effect distillation, and meets the requirements of fire extinguishing, irrigation and drainage for those applications requiring high-efficiency axially split double suction pumps.



## BB2-JHCD 单级双吸径向剖分两端支承离心泵

BB2-JHCD SINGLE STAGE DOUBLE SUCTION RADIAL SPLIT TWO END SUPPORTED CENTRIFUGAL PUMP

JHCD系列为单级、双吸、径向剖分、两端中心支撑离心泵，符合API610-11<sup>th</sup>标准,进出口法兰尺寸满足ANSI或ISO标准，密封腔的设计符合ISO21049/API682密封标准，适合安装集装式单封、有压串封或无压串封。冲洗、冷却、加热、急冷和缓冲液管路的连接符合API方案。

JHCD serie is a single-stage, double suction, radial split, and two-end center supported centrifugal pump, complying with the requirements of API610-11<sup>th</sup> standard, and the dimensions of the inlet and outlet flanges meet ANSI or ISO standards. The design of the sealing chamber complies with the ISO21049/API682 sealing standard and is suitable for installing cartridge-type single seals, pressure string seals, or non-pressure string seals. The connections of flushing, cooling, heating, quenching, and buer pipelines comply with the API plan.

### 性能范围

Performance Range

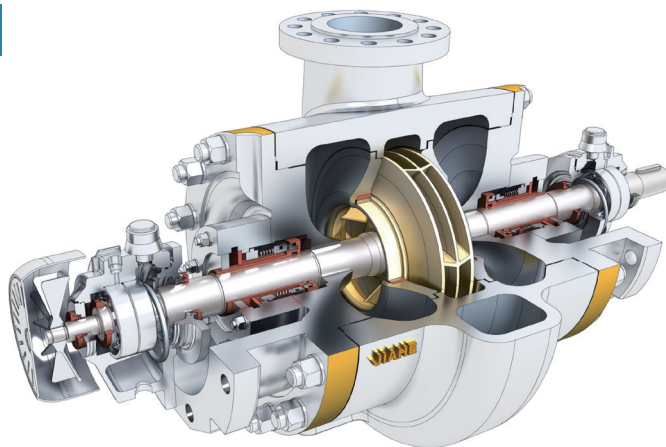
口径 (Diameter) : 150~600mm

流量 (Flow) : ~6500m<sup>3</sup>/h

扬程 (Head) : ~400m

温度 (Temperature) : -29℃~425℃

压力 (Pressure) : 5.0MPa



### 应用范围

Application Scope

适于输送轻烃类介质，腐蚀性介质，高温介质，各种清洁或含有微量颗粒、中性或有强腐蚀性介质，包括酸性液体、丙烷、原油等，如常压蒸馏、烷基化、真空蒸馏、延迟焦化、液化天然气等装置。

用于炼油厂原油输送、石油化工、天然气、煤化工、合成燃料、海洋平台、输油管线、高压给水、电厂、造纸和其它化工流程等行业中的高温、高压等重工位工况。

Suitable for transporting light hydrocarbon media, corrosive media, high-temperature media, various clean or containing trace particles, neutral or highly corrosive media, including acidic liquids, propane, crude oil, etc. such as atmospheric distillation, alkylation, vacuum distillation, delayed coking, liquefied natural gas and other devices.

Applied in industries such as refinery crude oil delivery, petrochemical, natural gas, coal chemical, synthetic fuels, marine platforms, oil pipelines, high-pressure water supply, power plants, paper and other chemical processes and other industries such as high-temperature, high-pressure and other heavy working conditions.



## BB2-JHBB/JHBD 两级径向剖分两端支承泵

BB2-JHBB/JHBD TWO-STAGE RADIAL SPLIT TWO END SUPPORT PUMP

JHBB/JHBD系列为两级、径向剖分两端支承离心泵,符合API610-11<sup>th</sup>标准。JHBB为首级单吸, JHBD为首级双吸, 进出口法兰尺寸满足ANSI或ISO标准, 密封腔的设计符合ISO21049/API682密封标准, 适合安装集装式单封、有压串封或无压串封。冲洗、冷却、加热、急冷和缓冲液管路的连接符合API方案。

JHBB/JHBD pump is a two-stage, radially split, two-end supported centrifugal pump, complying with API610-11<sup>th</sup> standard. JHBB is first stage single suction type, and JHBD is first stage double suction type, the dimensions of the inlet and outlet flanges meet ANSI or ISO standards. The design of the sealing chamber complies with the ISO21049/API682 sealing standard and is suitable for installing cartridge type single seals, pressure string seals, or non-pressure string seals. The connections of flushing, cooling, heating, quenching, and buer pipelines comply with the API plan.

### 性能范围

#### Performance Range

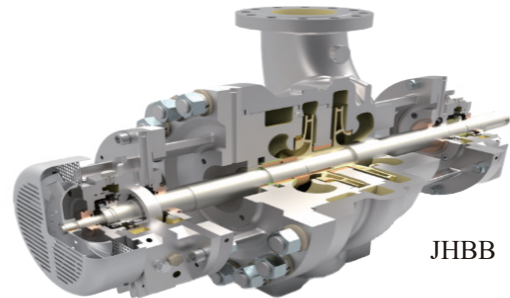
口径 (Diameter) : 50~300mm

流量 (Flow) : ~2000m<sup>3</sup>/h

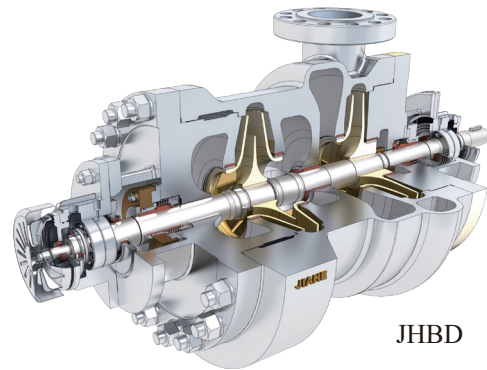
扬程 (Head) : ~740m

温度 (Temperature) : -29℃~425℃

压力 (Pressure) : ~10.0MPa



JHBB



JHBD

### 应用范围

#### Application Scope

适于输送轻烃类介质, 腐蚀性介质, 高温介质, 各种清洁或含有微量颗粒、中性或有强腐蚀性介质, 包括酸性液体、丙烷、原油等, 如常压蒸馏、烷基化、真空蒸馏、延迟焦化、液化天然气等装置。

用于炼油厂原油输送、石油化工、天然气、煤化工、合成燃料、海洋平台、输油管线、高压给水、电厂、造纸和其它化工流程等行业中的高温、高压等重工位工况。

Suitable for transporting light hydrocarbon media, corrosive media, high-temperature media, various clean or containing trace particles, neutral or highly corrosive media, including acidic liquids, propane, crude oil, etc. such as atmospheric distillation, alkylation, vacuum distillation, delayed coking, liquefied natural gas and other devices.

Applied in industries such as refinery crude oil delivery, petrochemical, natural gas, coal chemical, synthetic fuels, marine platforms, oil pipelines, high-pressure water supply, power plants, paper and other chemical processes and other industries such as high-temperature, high-pressure and other heavy working conditions.



## BB3-JHDK/JHDK-D 轴向剖分多级两端支承泵

BB3-JHDK/JHDK-D AXIALLY DISSECTED MULTISTAGE  
TWO-END SUPPORT PUMP

JHDK/JHDK-D系列泵为轴向剖分、多级、两端支承离心泵，符合API610-11<sup>th</sup>标准。JHDK-D为首级双吸叶轮，具有更低的NPSH。进出口法兰尺寸满足ANSI或ISO标准。密封腔的设计符合ISO21049/API682密封标准，冲洗、冷却、加热、急冷和缓冲液管路的连接符合API方案。

JHDK/JHDK-D series pumps are axially split, multi-stage, two-end supported centrifugal pumps, conforms to API 610-11<sup>th</sup> standard. JHDK-D is first stage type with double-suction Impeller, which has lower NPSH. Import and export flange size meets ANSI or ISO standard. The design of sealing chamber meets ISO21049/API682 sealing standard, and the connection of flushing, cooling, heating, emergency cooling and buffer piping meets API scheme.

### 性能范围

#### Performance Range

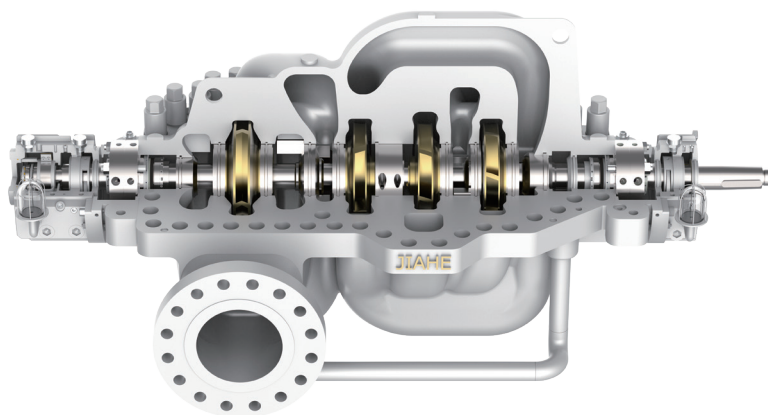
口径 (Diameter) : 40~400mm

流量 (Flow) : ~2000m<sup>3</sup>/h

扬程 (Head) : ~2100m

温度 (Temperature) : -80℃~200℃

压力 (Pressure) : ~26.0MPa



### 应用范围

#### Application Scope

用于炼油厂、石油化工、石油管线输送、矿山、冶金、锅炉给水、成品油输送、环境保护工程、海上工业和海水淡化及其它干净或含有杂质的流体输送，还可用于化工行业的高压液力能量回收透平，化肥、合成氨装置中的贫液泵和富液泵等领域。

Applied in oil refinery, petrochemical industry, petroleum pipeline transportation, mining, metallurgy, boiler water supply, refined oil transportation, environmental protection engineering. It can also be used in high pressure hydraulic energy recovery turbine in chemical industry, lean solution pump and rich liquid pump in fertilizer and synthetic ammonia device, etc.



## BB4-JHD 单壳体径向剖分多级两端支承泵

BB4-JHD SINGLE CASING RADially DISSECTED MULTI-STAGE TWO-END SUPPORT PUMP

JHD系列泵为单壳体、径向剖分、节段式、两端支承卧式多级离心泵，符合API610-11<sup>th</sup>标准，进出口法兰尺寸满足ANSI或ISO标准，密封腔的设计符合ISO21049/API682密封标准，冲洗、冷却、加热、急冷和缓冲液管路的连接符合API方案。

JHD series pumps are single-casing, radially split, segmented, two-end supported horizontal multistage centrifugal pumps. It conforms to API610-11<sup>th</sup> standard, inlet and outlet flange dimensions meet ANSI or ISO standards. The design of sealing chamber meets ISO21049/API682 sealing standard, and the connection of flushing, cooling, heating, emergency cooling and buffer piping meets API scheme.

### 性能范围

#### Performance Range

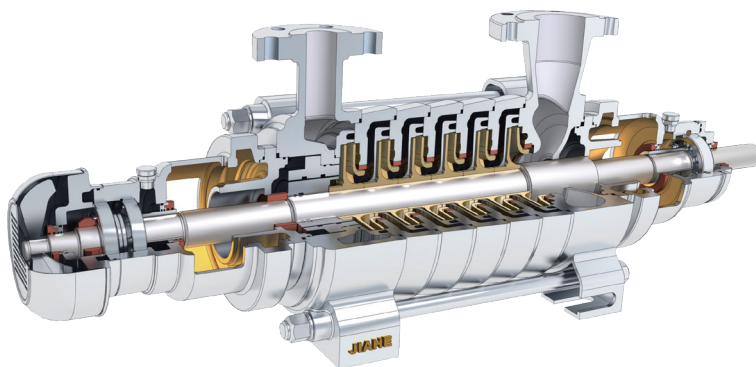
口径 (Diameter) : 40~200mm

流量 (Flow) : ~1000m<sup>3</sup>/h

扬程 (Head) : ~1600m

温度 (Temperature) : -29°C~180°C

压力 (Pressure) : ~18.0MPa



### 应用范围

#### Application Scope

适于输送各种低温或高温、低压或高压、清洁、中性或有腐蚀性的介质。

用于炼油厂、石油化工、乙烯装置、煤化工、热电厂、工业供水装置、城市供水、水处理行业、还可用于锅炉给水、冷凝水输送、海水淡化等工程。

It is suitable for transferring various low or high temperature, low or high pressure, clean, neutral or corrosive media.

It is used in oil refinery, petrochemical industry, ethylene device, coal chemical industry, thermal power plant, industrial water supply device, urban water supply, water treatment industry, and also used in boiler water supply, condensation transportation, seawater desalination and other projects.



## BB5-JHDT 双壳体径向剖分多级两端支承泵

BB5-JHDT DOUBLE SHELL RADIAL SPLIT MULTISTAGE TWO END SUPPORT PUMP

JHDT系列泵为双壳体、径向剖分、多级、两端支承离心泵，符合API610-11<sup>th</sup>标准，进出口法兰尺寸满足ANSI或ISO标准，密封腔的设计符合ISO21049/API682密封标准，冲洗、冷却、加热、急冷和缓冲液管路的连接符合API方案。

JHDT series pumps are double shell, radial split, multi-stage, and two-end supported centrifugal pumps, complying with API610-11<sup>th</sup> standard. The dimensions of the inlet and outlet flanges meet ANSI or ISO standards. The design of the sealing chamber complies with the S021049/API682 sealing standard, and the connections of flushing, cooling, heating, quenching, and buffer liquid pipelines comply with the API scheme.

### 性能范围

#### Performance Range

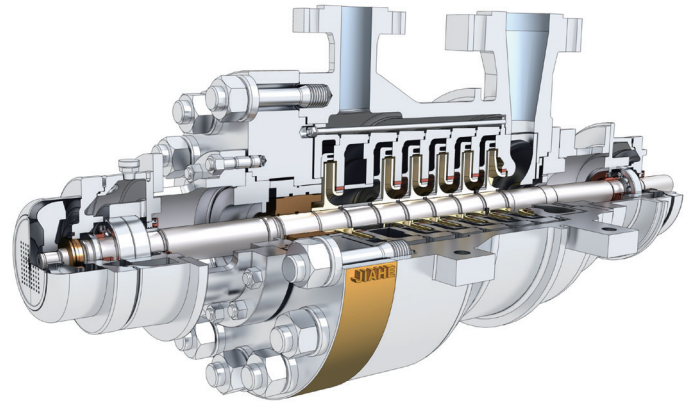
口径 (Diameter) : 40~ 200mm

流量 (Flow) : ~800m<sup>3</sup>/h

扬程 (Head) : ~2600m

温度 (Temperature) : -30°C ~ 425°C

压力 (Pressure) : ~ 30.0MPa



### 应用范围

#### Application Scope

适于输送石油、成品油、液化石油气、轻烃、煤化工中的贫甲醇、合成氨装置的贫液、富液、锅炉给水等各种清洁的或含有微量颗粒、易燃易爆、有毒的介质。

用于炼油厂、石油化工、煤化工、造纸、电力、通用工业、化工、给排水等行业，典型工位：如炼厂重油加氢装置中加氢进料泵、钢厂除焦除磷装置中高压除焦泵及电厂用高压锅炉给水泵等。

Suitable for transporting clean or trace particles, flammable, explosive, and toxic media such as lean methanol in petroleum, refined oil, liquefied petroleum gas, light hydrocarbons, coal chemical industry, lean liquid and rich liquid in synthetic ammonia equipment, boiler water supply, etc.

It is used in oil refinery, the petrochemical industry, the coal chemical industry, paper making, power, general industry, chemical industry, water supply and drainage and other industries. Typical stations are used for: hydrogenation feed pump in the heavy oil hydrogenation unit of refinery, high-pressure coking pump in coking and dephosphorization unit of steel plant, high-pressure boiler feed pump for power plant, etc.



## VS4-JHB 高温浓硫酸液下泵

VS4-JHB HIGH TEMPERATURE CONCENTRATED SULFURIC ACID SUBMERGED PUMP

JHB系列泵为单级、单吸、轴向吸入径向剖分液下离心泵，符合API610-11<sup>th</sup>标准。该系列泵液下深度可达3.6米，采用双支撑结构，液上采用两列角接触球轴承，承受轴向载荷，液下设有一对或两对滑动轴承（即轴套、衬套），承受径向载荷。过流部件选用具有自主知识产权的优质耐高温硫酸腐蚀的JSB合金材料，具有寿命长优点。

JHB serie pump is single-stage, single-suction, axial suction radially dissected submerged centrifugal pump, which satisfies API610-11<sup>th</sup> standard. This serie of pump can reach 3.6m depth under liquid. It adopts double support structure, with two rows of angular contact ball bearings on liquid to bear axial load, and a pair or two pairs of sliding bearings (i.e. sleeve and bushing) under liquid to bear radial load. The overflow parts are made of high quality high temperature sulphuric acid corrosion-resistant JSB alloy materials with independent intellectual property rights, with the advantage of long life cycle.

### 性能范围

#### Performance Range

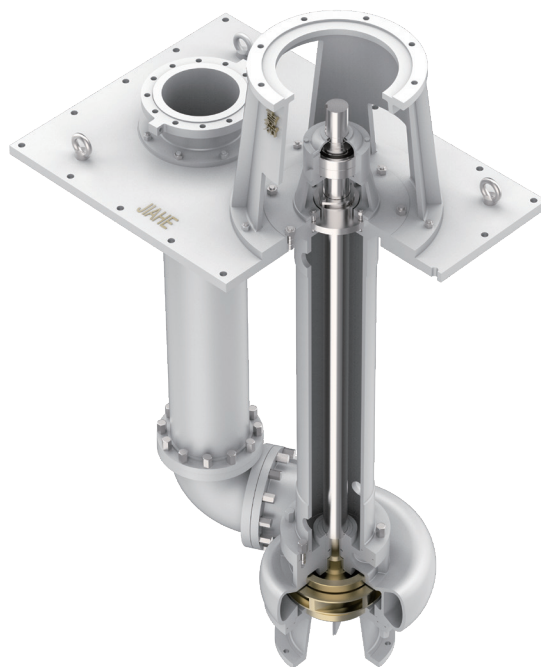
口径 (Diameter) : 50~600mm

流量 (Flow) : ~3200m<sup>3</sup>/h

扬程 (Head) : ~55m

温度 (Temperature) : ~120°C

压力 (Pressure) : ~1.0MPa



### 应用范围

#### Application Scope

适于硫酸生产中干燥和吸收循环系统及成品浓硫酸的输送，供输送温度 $\leq 120^{\circ}\text{C}$ ，浓度为93%~98%浓硫酸或 $\geq 105^{\circ}\text{C}$ 发烟酸的输送。

It is suitable for transferring transferring sulfuric acid in dry and absorption cycle system and finished products in sulfuric acid production, for transferring temperature  $\leq 120^{\circ}\text{C}$ , 93%~98% concentrated sulfuric acid or  $\geq 105^{\circ}\text{C}$  fuming acid.



## VS4-JHY 化工液下泵

VS4-JHY CHEMICAL SUBMERGED PUMP

JHY泵为单级、单吸、耐腐蚀、径向剖分、立式长轴液下离心泵。液下深度可达6米，按照ISO2858标准设计，部分符合API610-10<sup>th</sup>标准要求。

JHY pump is a single-stage, single-suction, corrosion-resistant, radially dissected, vertical long-shaft submerged centrifugal pump. The submerged depth can reach 6m. It is designed according to ISO2858 standard and partially meets the requirements of API610-10th standard.

### 性能范围

Performance Range

口径 (Diameter) : 25~300mm

流量 (Flow) : ~2000m<sup>3</sup>/h

扬程 (Head) : ~120m

温度 (Temperature) : -20℃~120℃

压力 (Pressure) : ~1.6MPa



### 应用范围

Application Scope

适于硫磷化工、煤化工、石油化工、冶金、合成纤维、医药等行业，输送不含固体颗粒的各种酸性、碱性、中性介质。

用于炼油厂、石油化工、煤化工、发电厂、环境保护工程、污水处理，水泥厂等行业和领域。自冲洗结构适合输送各种清洁的、无颗粒的、中性或有腐蚀性介质；外冲洗结构适合输送各种料浆、含颗粒的、污水的介质。

Suitable for sulfur and phosphorus chemical industry, coal chemical industry, petrochemical industry, metallurgy, synthetic fiber, medicine and other industries, transferring various acidic, alkaline and neutral media without solid particles.

It is used in oil refinery, petrochemical industry, coal chemical industry, power plant, environmental protection engineering, sewage treatment, cement plant and other industries and fields. The self-flushing structure is suitable for transferring various clean, particle-free, neutral or corrosive media; the external flushing structure is suitable for transferring various slurry, particle-containing and sewage media.



## VS5-JLF/JLZ 立式耐腐蚀渣浆泵

VS5-JLF/JLZ VERTICAL CORROSION  
RESISTANT SLURRY PUMP

JLF/JLZ 系列泵为立式、单级、单吸悬臂式液下离心泵，符合GB/T 5656/ISO 5199标准。泵水力按固液两相流理论设计，具有高效节能、抗磨耐腐、振动小、噪声低、运行可靠、使用寿命长、维修方便等特点。JLF系列兼顾耐腐蚀及耐磨性的物料输送，JLZ系列偏向耐磨蚀的中性、碱性腐蚀性料浆、矿浆输送。

JLF/JLZ series pumps are vertical, single-stage, single-suction cantilever submerged centrifugal pumps, which conform to GB/T 5656/ISO 5199 standard. The pump is designed according to the solid-liquid two-phase flow theory, with high efficiency and energy saving, anti-abrasion and corrosion resistance, low vibration, low noise, reliable operation, long service life, easy maintenance, etc. JLF serie takes into account the corrosion resistance and abrasion resistance of material transferring, and JLZ series favors the neutral and alkaline corrosive slurry and ore slurry conveying of wear corrosion.

### 性能范围

#### Performance Range

口径 (Diameter) : 25~300mm

流量 (Flow) : ~800m<sup>3</sup>/h

扬程 (Head) : ~60m

压力 (Pressure) : ~1.6MPa

温度 (Temperature) : ~120°C



### 应用范围

#### Application Scope

适用于固体浓度 $\leq 60\%$ 各种酸性、中性、碱性的腐蚀、磨蚀性浆液介质。

用于化肥、化工、污水处理、烟气脱硫、有色冶金、石油化工、食品、造纸、制糖、矿山等行业。

Suitable for solids concentration  $\leq 60\%$  of various acidic, neutral, alkaline corrosive, abrasive slurry media. used in fertilizer, chemical, sewage treatment, flue gas desulfurization, non-ferrous metallurgy, petrochemical, food, paper, sugar, mining and other industries.



## VS6-JHDL 立式多级双壳体筒袋泵

VS6-JHDL JHDL VERTICAL MULTISTAGE DOUBLE SHELL BARREL PUMP

JHDL系列为立式、多级、径向剖分、节段式、双壳体筒袋泵，符合API610-11<sup>th</sup>标准，进出口法兰尺寸满足ANSI或ISO标准，密封腔的设计符合ISO21049/API682密封标准，冲洗、冷却、加热、急冷和缓冲液管路的连接符合API682方案。

JHDL serie is a vertical, multi-stage, radial split, segmented, and double shell barrel pump, complies with API610-11<sup>th</sup> standard, the dimensions of the inlet and outlet flanges meet ANSI or ISO standards. The design of the sealing chamber complies with the ISO21049/API682 sealing standard, and the connections of flushing, cooling, heating, quenching, and buffer liquid pipelines comply with the API 682 scheme.

### 性能范围

#### Performance Range

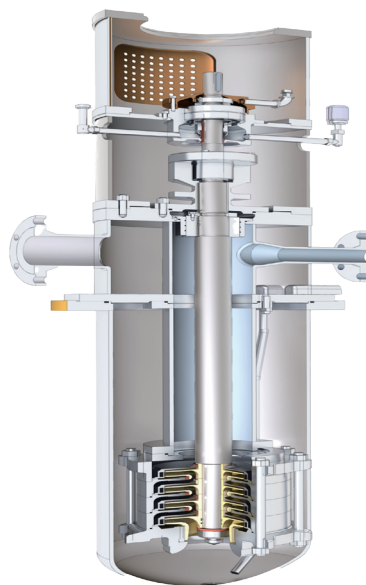
口径 (Diameter) : 40 ~ 200mm

流量 (Flow) : ~800m<sup>3</sup>/h

扬程 (Head) : ~1000m

温度 (Temperature) : -55°C ~ 180°C

压力 (Pressure) : 10.0MPa



### 应用范围

#### Application Scope

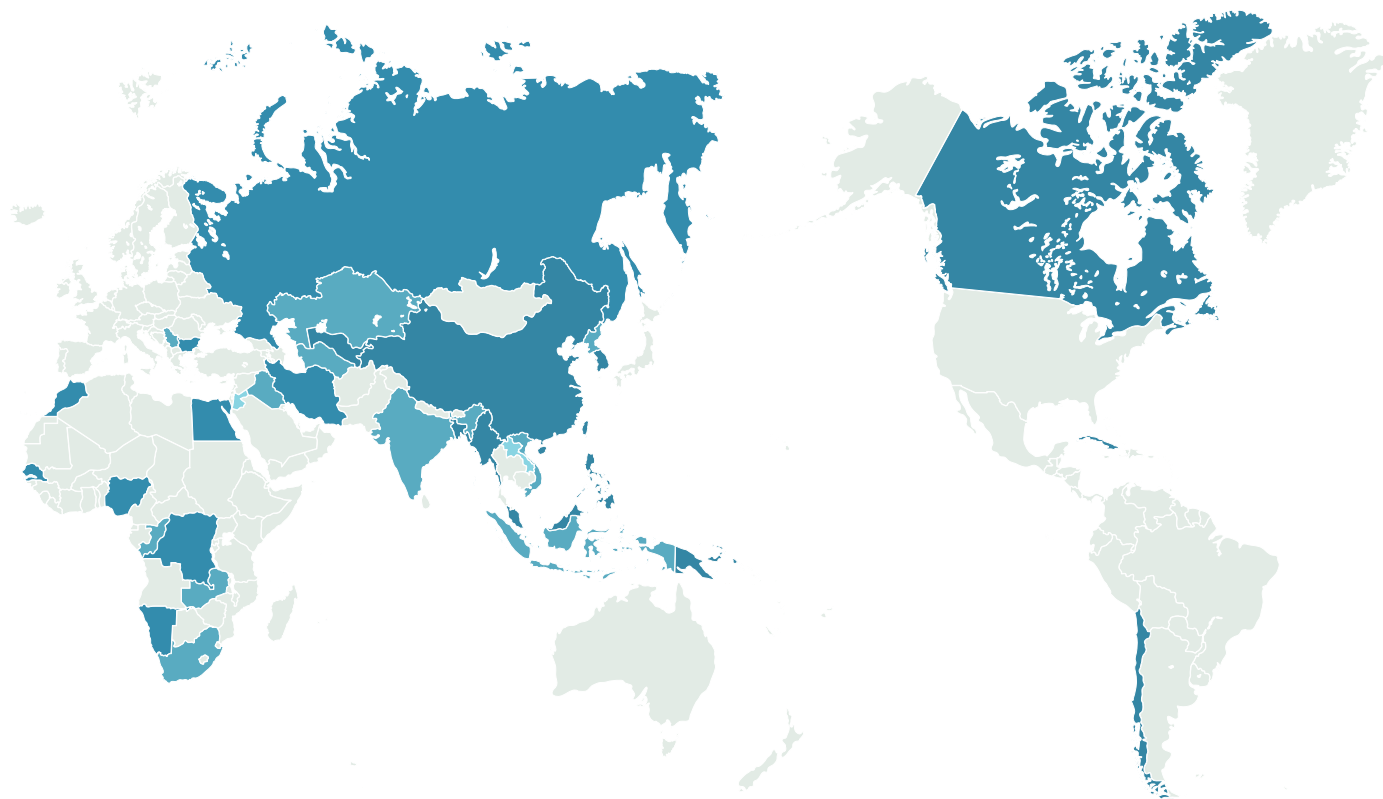
适于输送各种清洁或含有微量颗粒、低温或高温、化学中性或有腐蚀性的介质。

产品广泛运用于炼油厂、石油化工、煤化工、低温工程、核电等领域，典型工位如合成氨装置中的冷氨泵、热氨输送泵；乙烯装置中的乙烯产品泵、乙烯进料泵、脱甲烷塔底泵、脱甲烷塔回流泵；丙烷脱氢项目中的丙烯输送泵、闪蒸罐出料泵、乙烯进料泵；以及液化气输送泵、冷凝液泵、轻烃装船、装车泵等。

Suitable for transferring various clean or containing trace particles, low or high temperature, chemically neutral or corrosive media.

The product is widely used in fields such as refineries, petrochemical, coal chemical, low-temperature engineering, nuclear power, etc. Typical workstations such as cold ammonia pumps and hot ammonia transfer pumps in synthetic ammonia plants; The ethylene product pump, ethylene feed pump, demethanizer bottom pump, and demethanizer reflux pump in the ethylene plant; Propylene transfer pump, flash tank discharge pump, and ethylene feed pump in the propane dehydrogenation project; And liquefied gas delivery pumps, condensation pumps, light hydrocarbon loading pumps, loading pumps, etc.

# 市场与服务 MARKET&SERVICE



- ◆ 中国CHINA
- ◆ 俄罗斯RUSSIA
- ◆ 马来西亚MALAYSIA
- ◆ 印度尼西亚INDONESIA
- ◆ 孟加拉BANGLADESH
- ◆ 巴布亚新几内亚PAPUA NEW GUINEA
- ◆ 越南VIET NAM
- ◆ 菲律宾PHILIPPINES
- ◆ 缅甸MYANMAR
- ◆ 老挝LAOS
- ◆ 韩国SOUTH KOREA
- ◆ 朝鲜KOREA
- ◆ 伊朗IRAN
- ◆ 乌兹别克斯坦UZBEKISTAN
- ◆ 哈萨克斯坦KAZAKHSTAN
- ◆ 土库曼斯坦TURKMENISTAN
- ◆ 印度INDIA
- ◆ 埃及EGYPT
- ◆ 伊拉克IRAQ
- ◆ 南非SOUTH AFRICA
- ◆ 塞尔维亚SERBIA
- ◆ 智利CHILE
- ◆ 刚果(金) CONGO(KINSHASA)
- ◆ 纳米比亚NAMIBIA
- ◆ 赞比亚ZAMBIA
- ◆ 尼日利亚NIGERIA
- ◆ 塞内加尔SENEGAL
- ◆ 摩洛哥MOROCCO
- ◆ 约旦JORDAN
- ◆ 保加利亚BULGARIA
- ◆ 加拿大CANADA
- ◆ 古巴CUBA



嘉和

以卓越的技术和服务参与建设更美好的世界

Participate in Building a Better World with Excellent Technology and Service

地址：中国（云南）自由贸易试验区昆明片区拓翔路 208 号  
No. 208 Tuoxiang Road, Economic Development Zone, Kunming Area,  
China (Yunnan) Pilot Free Trade Zone

[Http://www.jhpumps.com](http://www.jhpumps.com)

电话 Tel: 0871-6741 3111/6563 8866

E-mail: [jhjt@jhpumps.com](mailto:jhjt@jhpumps.com)

邮编 P.C: 650501

