

Pump Catalog





COMPANY PROFILE

Kunming Jiahe Science & Technology Co.,Ltd. is a leading international manufacturer of industrial pumps and fluid power system service supplier. JH pumps was founded in 1988. As an innovator in the industry, it researches and produces high-efficiency chemical centrifugal pumps and provides full-process operation and maintenance management services. JH pumps's business covers more than 30 countries and regions around the world.

JH pumps collaborates deeply with global customers. With advanced R&D technology, rich application experience and complete product series, it provides world-class quality total solutions to improve efficiency and production capacity, reduce energy consumption and cost for our customers, and realize sustainable development.

JH pumps products cover more than 30 series and over 1000 specifications, which are widely used in petrochemical industry, sulfur and phosphorus chemical industry, non-ferrous smelting industry, coal chemical industry, fine chemical industry and other fields. This is a valuable asset that we have created and the basis for our products to be widely praised and trusted in the global market.

We have always been dedicated to the mission of "participating in building a better world with excellent technology and services", and are committed to building a win-win, harmonious and sustainable development of the century-old brand. We'd like to create a better future together with our global partners.

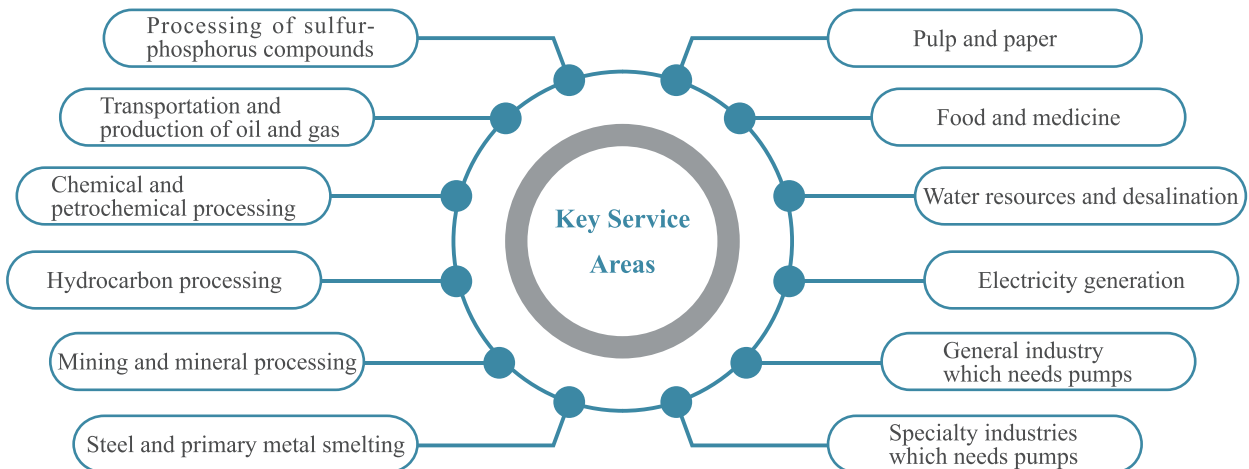
CATALOGS

WHAT FIELDS WE SERVE	2
CAPABILITIES OF JH PUMPS	3
PROCESSING CAPABILITY	4
GLOBAL MARKET	5
PUMP SCHEMATIC DIAGRAM FOR THE EQUIPMENT	6
JHB (VS4)	8
JHG (VS4)	9
JHY (VS4)	10
JHL (VS4)	11
JHXL (VS5)	12
JLF/JLZ (VS5)	13
JHA/JHAO (OH1)	14
JHC (OH1)	15
JW (OH1)	16
JFZ(N) (OH1)	17
JFZ (F)/JFZ (C) (OH1/OH2)	18
JHE/JHF (OH2)	19
OHA (OH2)	20
JAS (BB1)	21
JHD (BB4)	22
JFZ/JFZ(T)(SPECIALSTRUCTURE)	23
JZJ (SPECIAL STRUCTURE)	24
JHZ/JLHZ (VS3)	25

WHAT FIELDS WE SERVE

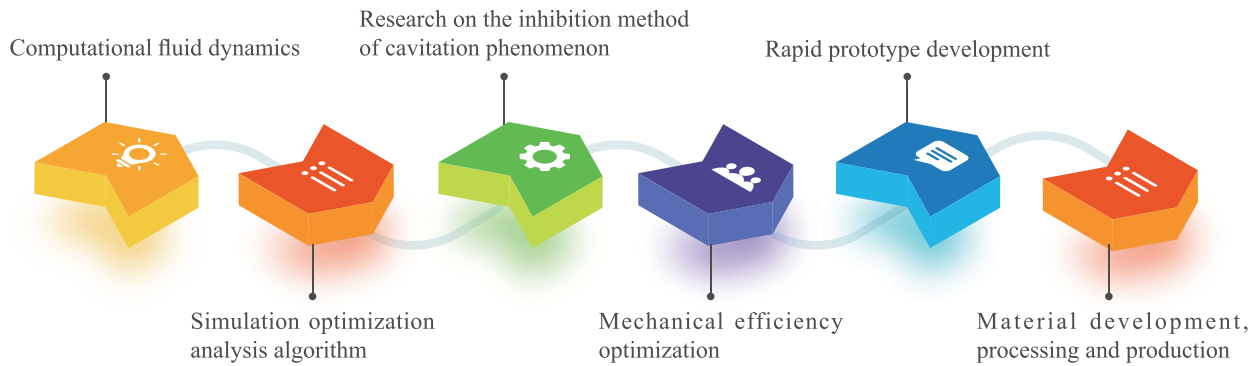
Head supplier in the global industrial pump supply chain

JH pumps is an innovation driver in the global industrial pump market. Compared to other pump manufacturers in the world, JH pumps has the leading edge and expertise in the field of industrial pump manufacturing, customized off-standard pump products and system optimization. The following are the key industrial fields that JH pumps focus on serving:



CAPABILITIES OF JH PUMPS

It is in the world's first-class technology echelon in terms of fluid power control, equipment design and energy efficiency and other performance enhancement. JH pumps independently innovated and developed more than 30 new materials of JSB alloy series in material engineering. JH pumps capabilities are as follows:



PRECISION CASTING

JH pumps Casting factory has 4 special steel casting production lines including 2 3,000-ton-per-year resin sand production lines, 1 600-ton-per-year disappearance mold casting production line and 1 100-ton-per-year fine casting production line. Casting process design uses three-dimensional Proe software simulation. The pre-analysis of the casting solidification process uses Huazhu CAE casting process system software. Equipped with floor-standing spectrometer, heat treatment equipment, shot blasting and other advanced equipment to ensure the quality of castings. The molten steel produced at one time reaches 2.5 tons.



PROCESSING CAPABILITY

CNC horizontal lathe, CNC vertical lathe, CNC floor milling and boring machine, machining center and more than 100 sets of equipments.

The maximum machining diameter reaches 3 meters, and the maximum workpiece length is 6 meters.



INTRODUCTION OF JH PUMPS

This promotional brochure aims to present Jiahe's pump product series. JH pumps products include more than 30 series and over 1000 specifications, most pump types are complementary to each other, designed and manufactured in accordance with international standards and customer-required specifications. Each product is clearly marked with its model and name, along with the applicable standards and specifications, performance parameters, and scope of application.

GLOBAL MARKET



CHINA
 INDONESIA
 VIET NAM
 LAOS
 IRAN
 TURKMENISTAN
 IRAQ
 CONGO(KINSHASA)
 NIGERIA
 JORDAN
 CUBA
 SAUDI ARABIA
 UNITED ARAB EMIRATES

RUSSIA
 BANGLADESH
 PHILIPPINES
 SOUTH KOREA
 UZBEKISTAN
 INDIA
 SOUTH AFRICA
 NAMIBA
 SENEGAL
 BULGARIA
 CHILE
 COLOMBIA

MALAYSIA
 PAPUANEWGUINEA
 MYANMAR
 KOREA
 KAZAKHSTAN
 EGYPT
 SERBIA
 ZAMBIA
 MOROCCO
 CANADA
 TURKEY
 BRAZIL



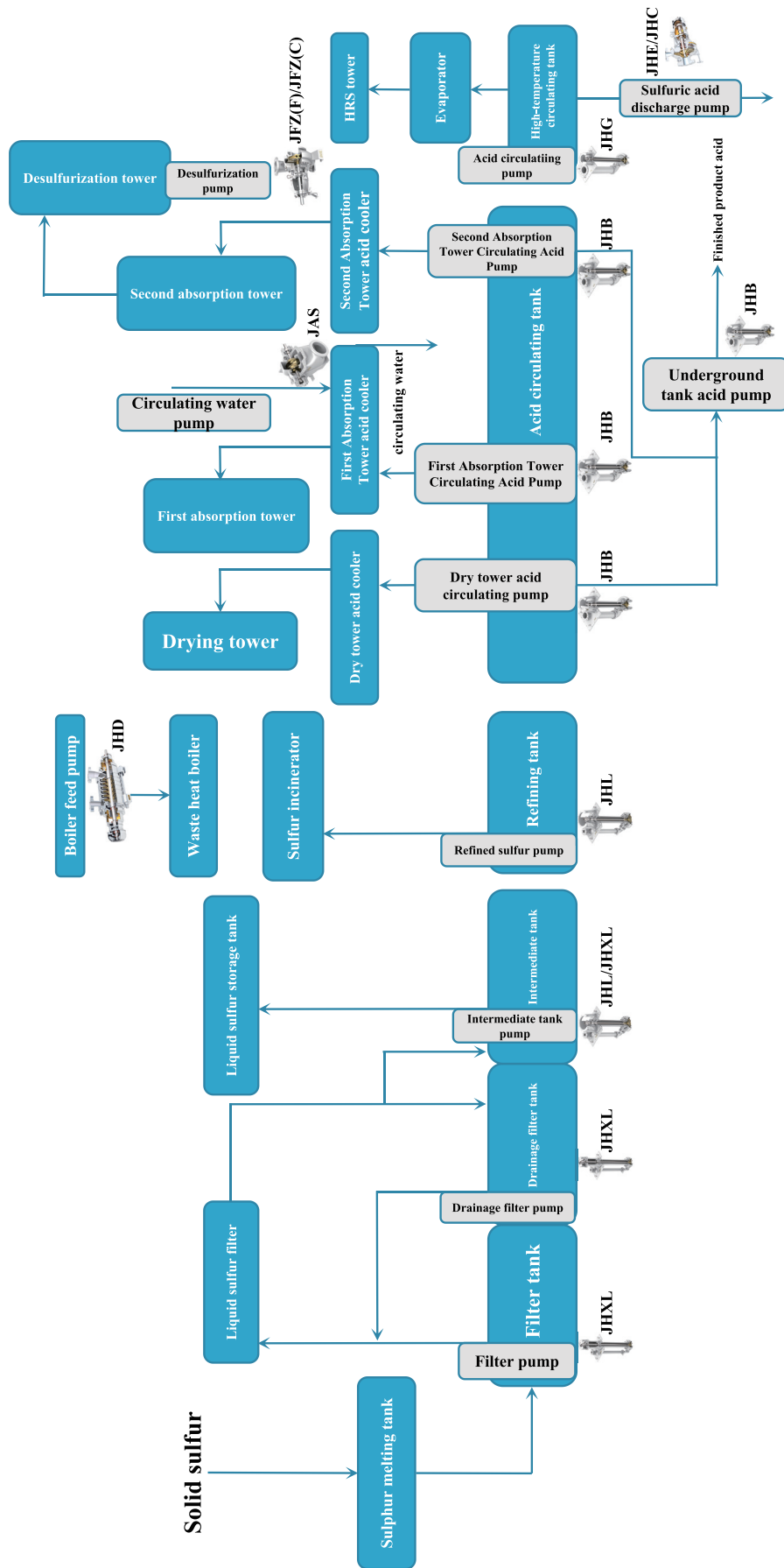
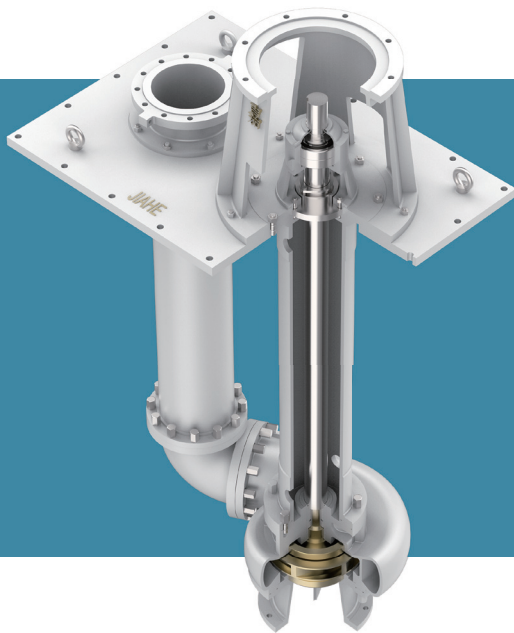


Figure 2 Schematic diagram of key pumps used in the Sulfur-based sulfuric acid production

JHB HIGH TEMPERATURE CONCENTRATED SULFURIC ACID SUBMERGED PUMP(VS4)

JHB series pump is single-stage, single-suction, axial suction radially dissected submerged centrifugal pump, which conforms to API610-11th standard. This series of pump can reach 3.6m depth under liquid. It adopts double support structure, with two rows of angular contact ball bearings on liquid to bear axial load, and a pair or two pairs of sliding bearings (i.e. sleeve and bushing) under liquid to bear radial load. The overflow parts are made of high quality JSB alloy material which is resistant to high temperature and sulfuric acid corrosion, with the advantage of long life cycle.



Performance Range

Diameter : 50 ~ 600mm

Flow : ~ 3520m³/h

Head : ~ 55m

Pressure : 1.0MPa

Temperature : ~ 120°C

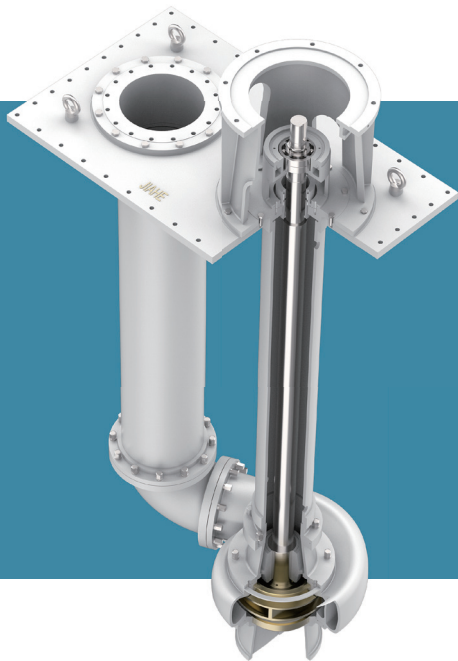
Application

It is suitable for transferring sulfuric acid in drying and absorption circulation system and finished products process of sulfuric acid production, for transferring 93%~98% concentrated sulfuric acid with temperature $\leq 120^{\circ}\text{C}$, or fuming acid with concentration $\geq 105\%$.



JHG ULTRA HIGH TEMPERATURE CONCENTRATED SULFURIC ACID SUBMERGED PUMP(VS4)

JHG series pump is single-stage, single-suction, axial suction radially dissected submerged centrifugal pump, which conforms to ISO13709/API610-11th standard. This series of pump can reach 3.6m depth under liquid, with double support structure, two rows of angular contact ball bearings on liquid to bear axial load, a pair or two pairs of sliding bearings (i.e. sleeve and bushing) under liquid to bear radial load, and the overflow parts are made of high quality high-temperature stainless steel which is resistant to high temperature sulfuric acid corrosion.



Performance Range

Diameter : 25 ~ 450mm

Flow : ~ 2500m³/h

Head : ~ 23m

Pressure : 1.0MPa

Temperature : ~ 250°C

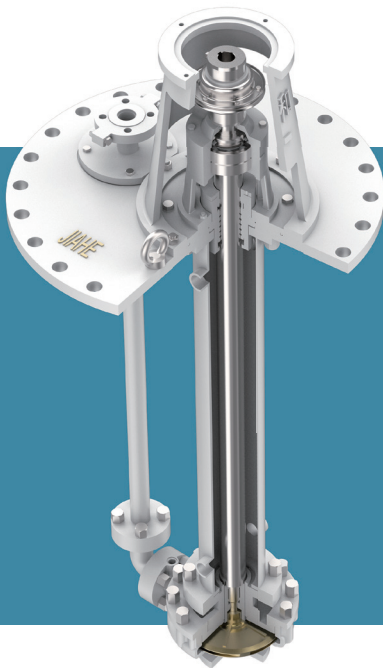
Application

It is suitable for transferring concentrated sulfuric acid with temperature $\leq 250^{\circ}\text{C}$ and concentration 98.6%~100%.



JHY CHEMICAL SUBMERGED PUMP(VS4)

JHY pump is a single-stage, single-suction, corrosion-resistant, radially dissected, vertical long-shaft submerged centrifugal pump. The submerged depth can reach 6m. It is designed according to ISO2858 standard and partially meets the requirements of API610-10th standard.



Performance Range

Diameter : 25 ~ 300mm

Flow : ~ 2000m³/h

Head : ~ 120m

Pressure : ~ 1.6MPa

Temperature : -20°C ~ 120°C

Application

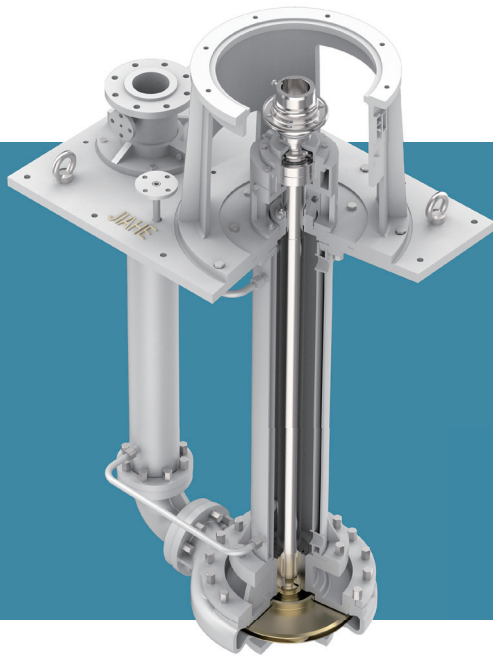
Suitable for sulfur and phosphorus chemical industry, coal chemical industry, petrochemical industry, metallurgy, synthetic fiber, medicine and other industries, transferring various acidic, alkaline and neutral media without solid particles.

It is used in oil refinery, petrochemical industry, coal chemical industry, power plant, environmental protection engineering, sewage treatment, cement plant and other industries and fields. The self-flushing structure is suitable for transferring various clean, particlefree, neutral or corrosive media; the external flushing structure is suitable for transferring various slurry, particle-containing and sewage media.



JHL HIGH TEMPERATURE SULFUR SUBMERGED PUMP(VS4)

JHL series pump is single-stage, single-suction submerged centrifugal pump, which conforms to ISO13709/API610 standard. It adopts double support structure, steam jacket design for liquid contacting tube parts and liquid discharge tube parts, and high quality high temperature corrosion resistant material for overflow parts, which has the advantages of strong passing capacity, stable operation and long life cycle.



Performance Range

Diameter : 25 ~ 150mm

Flow : ~ 200m³/h

Head : ~ 120m

Pressure : ~ 2.5MPa

Temperature : ~ 180°C

Application

Suitable for transferring molten liquid sulfur at $135^{\circ}\text{C} \leq T \leq 145^{\circ}\text{C}$, sulfur containing particles and impurities.

Used for fine sulfur and liquid sulfur transferring station.



JHXL HIGH TEMPERACRUDE SULFUR SUBMERGED PUMP(VS5)

The JHXL series is a single-stage, single-suction submerged centrifugal pump that complies with the ISO13709/API610 standards. It features no submerged sliding bearings and a semi-open impeller design, which ensures strong passage capacity for media.. Both the liquid-contacting components and discharge pipe sections adopt a steam jacket structure, , while the flow-through parts are constructed from high-quality, high-temperature and corrosion-resistant materials. These design highlights contribute to its stable operation and extended service life.



Performance Range

Diameter : 25~150mm

Flow : ~200m³/h

Head : ~60m

Pressure : ~1.6MPa

Temperature : ~180°C

Application

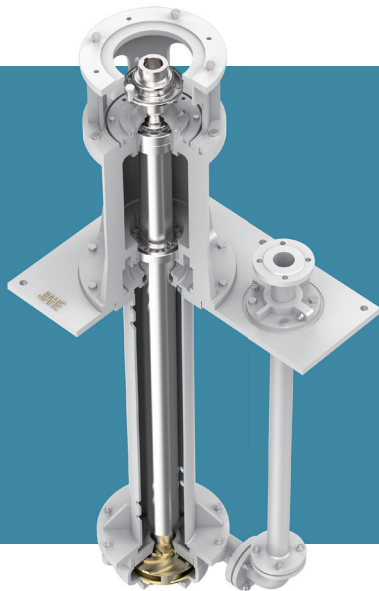
Designed for transferring molten sulfur (135–145°C), including particle- and impurity-containing sulfur.

It is applicable to liquid crude sulfur transfer, as well as filter tank transfer pumps, intermediate tank pumps and other stations.



JLF/JLZ VERTICAL CORROSION RESISTANT SLURRY PUMP(VS5)

JLF/JLZ series pumps are vertical, single-stage, single-suction cantilever submerged centrifugal pumps, complying with GB/T5656/ISO5199 standards. Designed based on the solid-liquid two-phase flow theory, they feature high efficiency, energy savings, wear and corrosion resistance, low vibration, low noise, reliable operation, long service life, and easy maintenance. JLF series take into account the corrosion resistance and abrasion resistance for the conveyed media,, while the JLZ series are specialized for handling neutral/alkaline corrosive slurries and ore slurries with heavy wear-corrosion, ensuring optimal performance even in tough conditions.



Performance Range

Diameter : 25 ~ 300mm

Flow : ~ 800m³/h

Head : ~ 60m

Pressure : ~ 1.6MPa

Temperature : ~ 120°C

Application

Suitable for various acidic, neutral, and alkaline corrosive, abrasive slurry media with a solid concentration of $\leq 60\%$.

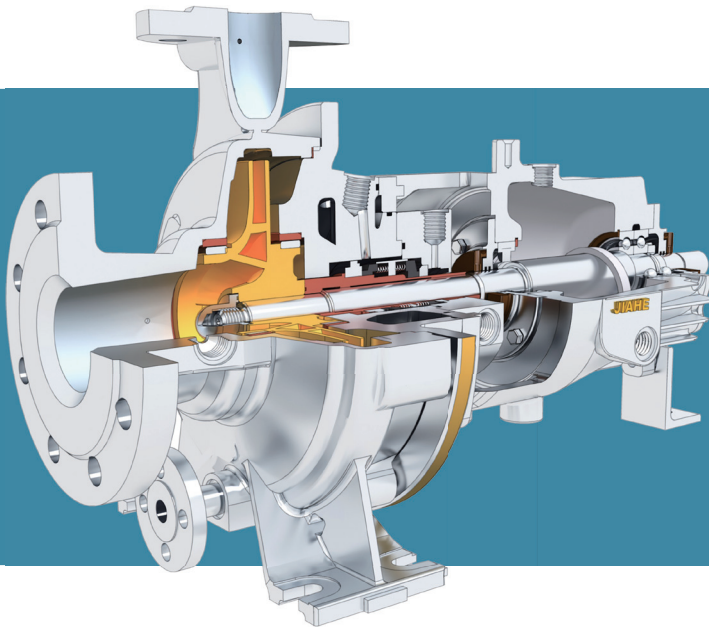
It is applicable in industries such as fertilizer production, chemical engineering, sewage treatment, flue gas desulfurization, non-ferrous metallurgy, petrochemical, food processing, papermaking, sugar refinin, and mining.



JHA/JHAO FOOT INSTALLATION SINGLE STAGE CANTILEVER PROCESS PUMP(OH1)

JHA/JHAO series are single-stage, single suction, radially split, foot-mounted cantilever centrifugal pump, compliant with API610-10th edition.

The JHA features a closed impeller, while JHAO is equipped with a semi-open impeller. The closed impeller offers excellent anti-cavitation performance and high efficiency; whereas the Semi-open impeller is suitable for conveying particle-containing media and easily crystallized slurries.



Performance Range

Diameter : 25~ 400mm

Flow : ~ 2600m³/h

Head : ~ 300m

Pressure : 2.5MPa

Temperature : -80°C~ 300°C

Application

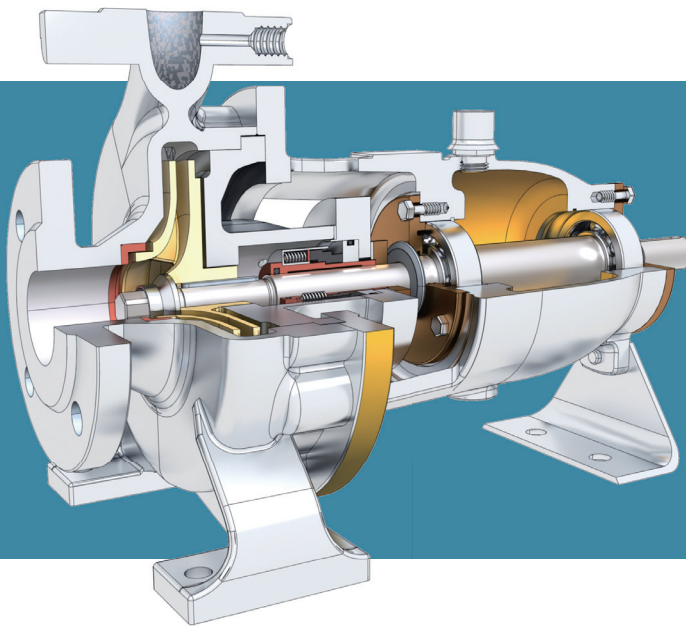
Suitable for transferring various clean media or those containing small amounts of particles, as well as media with low or high temperatures, medium or high pressures, neutral or corrosive properties.

It is applicable in fields such as refineries, petrochemical industry, ethylene plants, low-temperature engineering, coal chemical industry, and fine chemical industry.



JHC FOOT INSTALLATION SINGLE STAGE CANTILEVER PROCESS PUMP(OH1)

JHC series are single-stage, single-suction, radially split, foot-mounted, cantilever centrifugal pumps. JHC pumps conform to DIN24256/ ISO5199. The inlet and outlet flanges' pressure ratings and dimensions are in accordance with ISO standards and can withstand large orifice load. The JHC pumps' design and manufacturing standard conforms to ISO5199 (GB/T5656-2008). The pumps' materials include cast iron, carbon steel, stainless steel and other materials to meet different working conditions. According to customer's requirements, JHC pumps configure single-end mechanical seal or double-end mechanical seal.



Performance Range

Diameter: 32~300mm

Flow: ~2000m³/h

Head: ~160m

Pressure: ~2.5MPa

Temperature: -80°C~150°C

Application

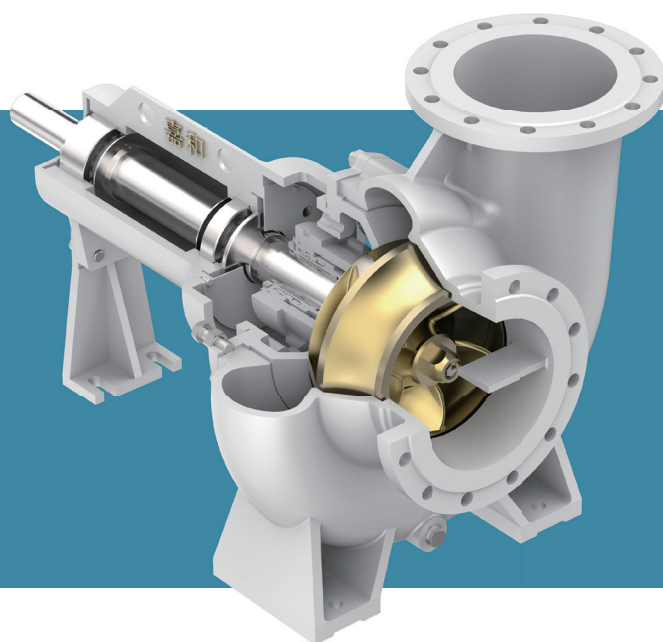
JHC pumps are suitable for transferring all kinds of clean or containing a small amount of particles, low temperature, room temperature or high temperature, neutral or corrosive media.

JHC pumps are used in chemical and petrochemical industry, LPG and LNG industry, oil refinery, coal chemical industry, sugar, paper making, metallurgical industry, etc.



JW CHEMICAL MIXED FLOW PUMP(OH1)

JW series chemical mixed-flow pump is a single-stage, single-suction, radially split, cantilever centrifugal pump. It complies with the GB/T13008 standard. Designed based on the solid-liquid two-phase flow theory, its hydraulic design fully considers the transfer of slurry particles, ribbon fibers, and the like. The overflow components are made of duplex stainless steel, featuring wear resistance, corrosion resistance, low vibration, low noise, reliable operation, long service life and easy maintenance.



Performance Range

Diameter : 200 ~ 700mm

Flow : ~ 8000m³/h

Head : 5 ~ 20m

Pressure : ~ 1.0MPa

Temperature : ~ 120°C

Application

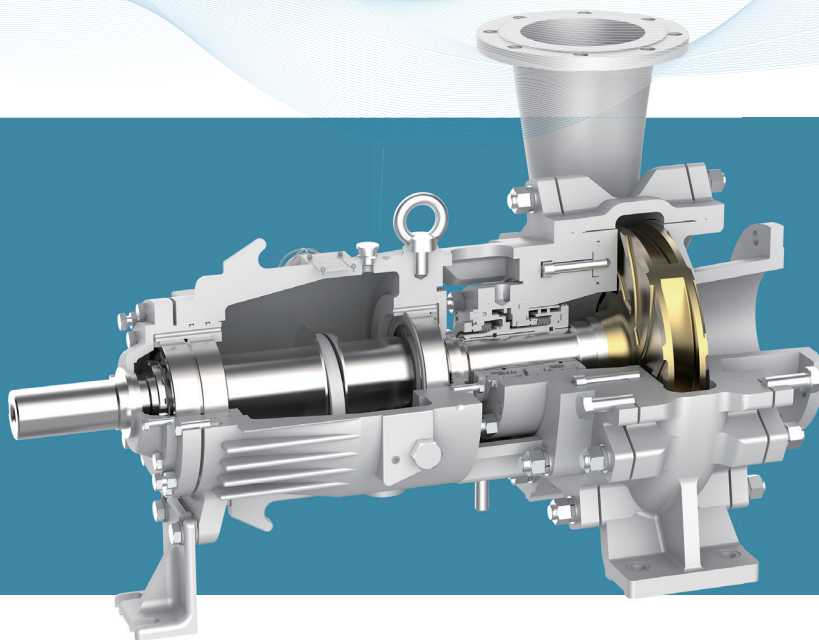
Suitable for conveying various acidic, neutral, alkaline corrosive, abrasive slurry media with a solid concentration of $\leq 60\%$.

It is applicable in industries such as phosphate fertilizer production, wet metallurgy, non-ferrous metallurgy, salt manufacturing, alkali production, power plants and light industry.



HIGH EFFICIENCY INTELLIGENT CORROSION RESISTANT AND ABRASION RESISTANT PUMP(OH1)

JFZ (N) is a horizontal corrosion- and abrasion- resistant pump. It is a single-stage, single-suction, horizontal, radially split cantilever centrifugal pump.



Performance Range

Diameter : 25 ~ 450mm

Flow : 7 ~ 3000m³/h

Head : 20 ~ 156m

Pressure : ~ 2.5MPa

Temperature : ~ 120°C

Application

It is suitable for transferring solid-containing media with a concentration of $\leq 60\%$ and the maximum temperature of the conveyed medium is 120°C.

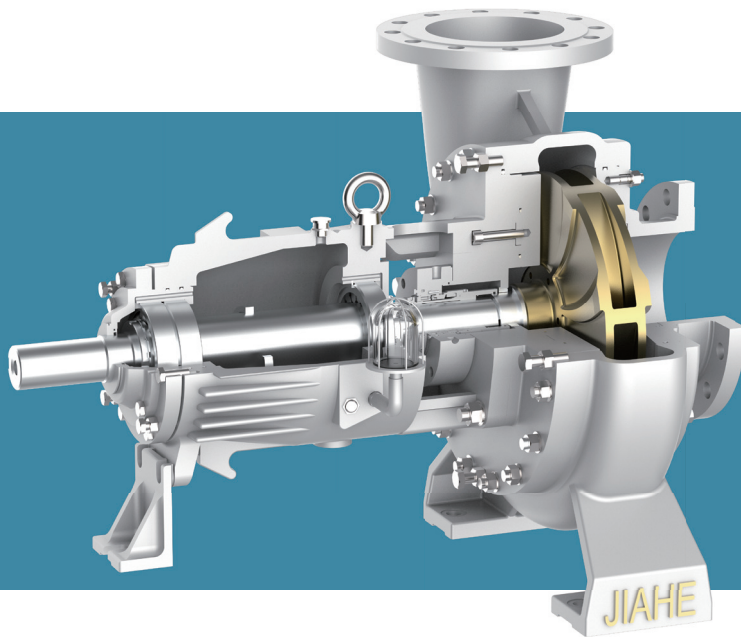
It is widely applied in industries including phosphate fertilizer production, flue gas desulfurization, non-ferrous metallurgy, petrochemicals, food processing, pharmaceuticals, papermaking, and sewage treatment.



FLUE GAS DESULFURIZATION CIRCULATING PUMP(OH1/OH2)

JFZ (F)/JFZ (C) series are horizontal, single-stage, single suction, radially split, foot-mounted/center supported, and cantilever centrifugal pumps that conform to the OH1/OH2 pump types specified in the API610 10th Edition standard".

Based on the two-phase flow theory and practical experience in handling corrosion-resistant and abrasion-resistant working conditions in petrochemical plants, , these pumps can transport media with a solid content of up to 65%.



Performance Range

Diameter : 100 ~ 1000mm

Flow : 50 ~ 15000m³/h

Head : 10 ~ 142m

Pressure : ~ 5.0MPa

Temperature : ~ 120°C

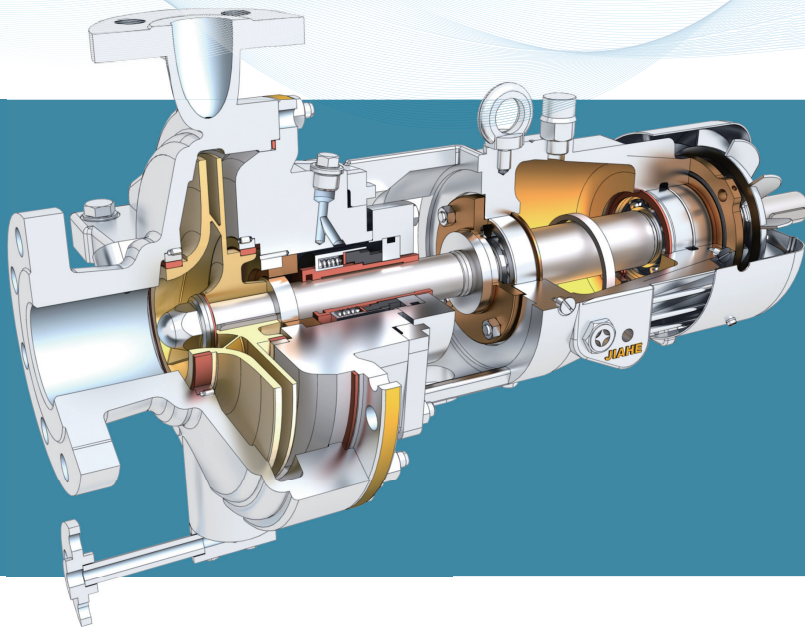
Application

Suitable for transporting high-temperature, high-pressure, heavy-duty, corrosive, and abrasive media in refineries and flue gas desulfurization units, including applications in workstations such as high-temperature oil slurry, high-pressure coal water slurry, desulfurization liquid, high-pressure circulating gas water, chilled water, ash water, and slag pool.



JHE/JHF CENTERLINE INSTALLATION OF SINGLE STAGE CANTILEVER PROCESS PUMP(OH2)

JHE/JHF series are single-stage, single suction, radial split, centerline mounted, cantilever centrifugal pumps. JHE/JHF series meet the requirements of API610-10th and DIN/ISO/VDMA24927 standards.



Performance Range

Diameter: 25~ 400mm
 Flow : ~ 2600m³/h
 Head : ~ 300m
 Temperature: -80°C~ 450°C
 Pressure: JHE: 5MPa
 JHF: 7.5MPa

Application

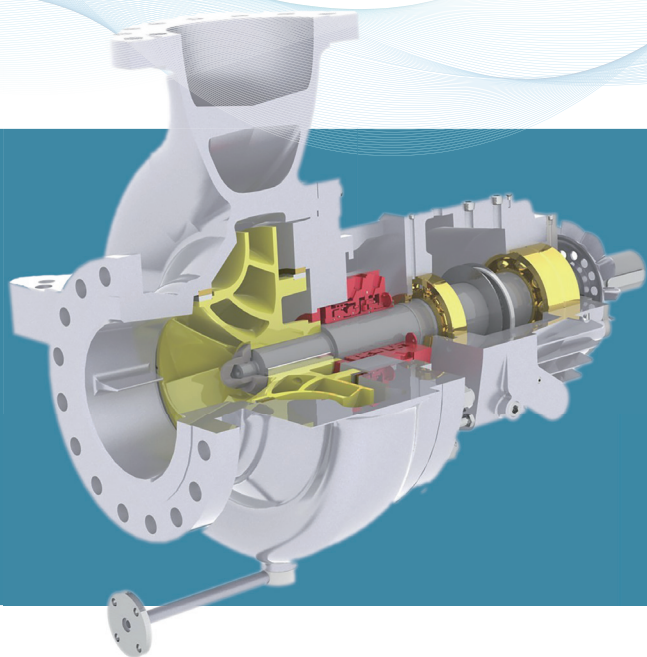
JHE/JHF pumps are suitable for transferring various clean or containing small amounts of particles, low or high temperature, medium or high pressure, neutral or corrosive media.

JHE/JHF pumps are applied in fields such as refineries, petrochemical, ethylene plants, low-temperature engineering, coal chemical, and fine chemical industries.



OHA ENERGY EFFICIENT PUMP(OH2)

OHA(OH2) pumps are single-stage, single-suction, center-supported centrifugal pumps compliant with API610-11th.



Performance Range

Diameter : 25 ~ 400mm

Flow : ~ 2600m³/h

Head : ~ 300m

Pressure : ~ 5.0MPa

Temperature : -80°C~ 450°C

Application

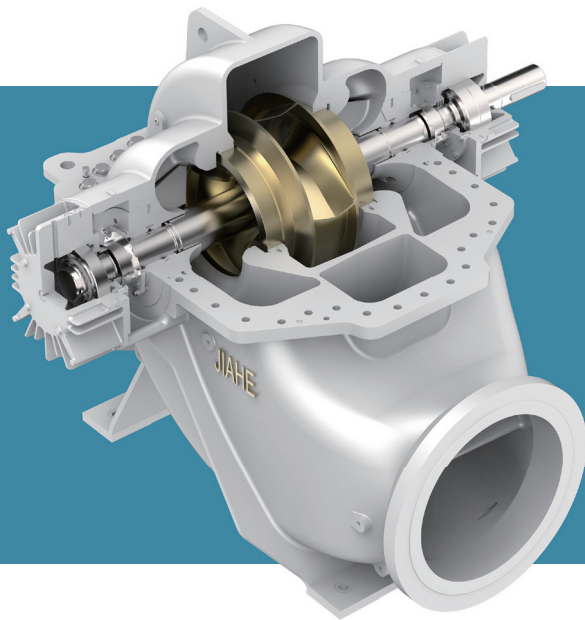
Suitable for transferring various clean or containing a small amount of particles, low or high temperature, medium or high pressure, and neutral or corrosive media.

Applied in oil refineries, petrochemicals, ethylene facilities, low-temperature engineering, coal chemical industry, fine chemical industry and other fields.



JAS HIGH-EFFICIENCY AND ENERGY-SAVING DOUBLE SUCTION PUMP(BB1)

JAS refers to single-stage, double-suction, axially-split horizontal centrifugal pump. Its design adheres to GB/T5656- 2008 standard and meets both the EU 2009/EC and GB/T13007-2011 energy efficiency standards. The JAS pump not only delivers high efficiency and superior pumping performance but also offers enhanced durability and ease of maintenance. In terms of energy efficiency, its average pump efficiency exceeds the national standard GB 19762-2007 Energy Efficiency Limits and Energy Conservation Evaluation for Clear Water Centrifugal Pumps by 3%.



Performance Range

Diameter : 150 ~ 1000mm

Flow : 150 ~ 25000m³/h

Head : 10 ~ 260m

Pressure : ~ 3.5MPa

Temperature : -30°C ~ 140°C

Application

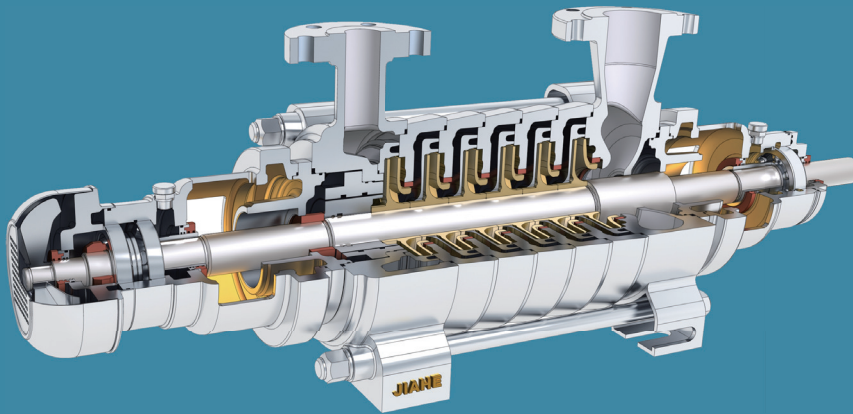
Suitable for water supply and treatment, industrial water circulation, power stations, thermal power plants and pipe network heating, as well as distribution of hot and cold water in industrial systems.

It is used in desalination systems of water treatment plants by reverse osmosis and multi-effect distillation, and meets the demands of fire-fighting, irrigation and drainage for those applications requiring high-efficiency axially split double suction pumps.



JHD SINGLE CASING RADIALLY DISSECTED MULTI-STAGE TWO-END SUPPORT PUMP(BB4)

JHD series pumps are single-casing, radially split, segmented, two-end supported horizontal multistage centrifugal pumps. Designed in strict compliance with API610-11th standard. Inlet and outlet flange dimensions meet ANSI or ISO standards. The design of sealing chamber meets ISO21049/API682 sealing standard, and the connection of flushing, cooling, heating, emergency cooling and buffer piping meets API scheme.



Performance Range

Diameter : 40 ~ 200mm

Flow : ~ 1000m³/h

Head : ~ 1600m

Pressure : ~ 18MPa

Temperature : -29°C ~ 180°C

Application

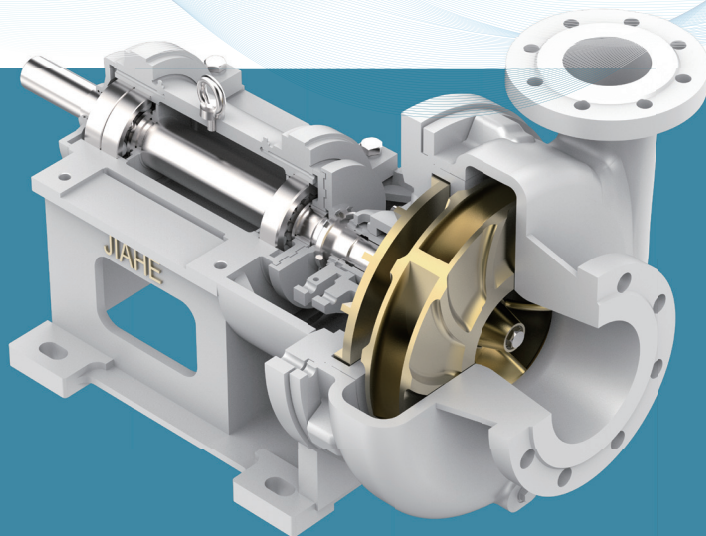
It is suitable for transferring various low or high temperature, low or high pressure, clean, neutral or corrosive media.

It is used in oil refinery, petrochemical industry, ethylene device, coal chemical industry, thermal power plant, industrial water supply device, urban water supply, water treatment industry, and also used in boiler water supply, condensation transportation, seawater desalination and other projects.



JFZ/JFZ(T) CORROSION AND ABRASION RESISTANT PUMP (SPECIAL STRUCTURE)

JFZ/JFZ(T) series are horizontal, single-stage, single-suction, radially split cantilever centrifugal pumps. Engineered based on two-phase flow theory and practical experience, they comply with GB/T 5656 and ISO 5199 standards.



Performance Range

Diameter: 25 ~ 300mm

Flow : ~ 1000m³/h

Head : ~ 60m

Pressure : ~ 1.6MPa

Temperature : ~ 120°C

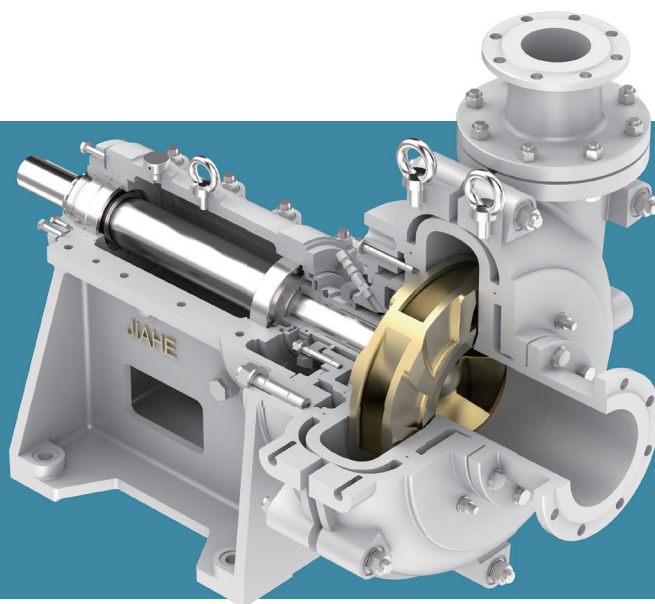
Application

Suitable for conveying solid media with a concentration of $\leq 60\%$ and can handle media medium temperature up to 120 °C, making it applicable to industries such as phosphate fertilizer production, flue gas desulfurization, non-ferrous metallurgy, petrochemical, food processing, pharmaceuticals, papermaking, sewage treatment, mining, and alumina processing.



JZJ-SLURRY PUMP(SPECIAL STRUCTURE)

JZJ series is horizontal, single-stage, single-suction, new anti-abrasion and anti-corrosion centrifugal heavy-duty slurry pump. This series of pumps features strong passage capacity, rational structure, smooth and reliable operation, high efficiency and energy conservation, as well as easy maintenance and operation.



Performance Range

Diameter : 40 ~ 350mm

Flow : ~ 1500m³/h

Head : 15 ~ 130m

Pressure : 1.6MPa

Temperature : ~ 120°C

Application

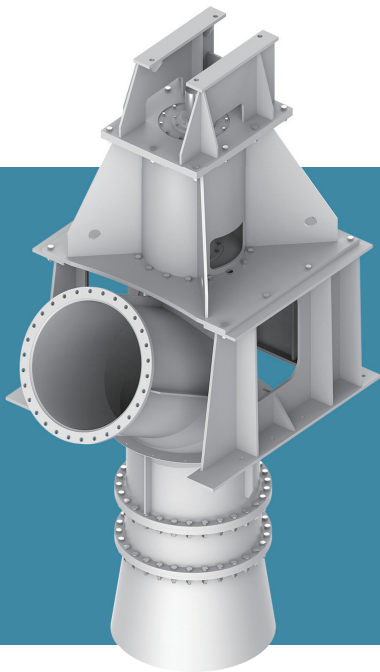
Suitable for metallurgy, mining, chemical, electric power, coal, aluminum and other basic industrial transferring.

It is used for abrasive stations such as slurry feeding, tailings conveying, coal slurry, ash slag station.



JHZ/JLHZ CHEMICAL AXIAL FLOW PUMP(VS3)

JHZ/JLHZ series chemical axial flow pumps are designed based on the solid-liquid two-phase flow theory and comply with GB/ T13008 standard. JHZ series are horizontal, front-opening, single-stage, single-suction cantilever structure, which can be maintained without disassembling the pump body or pipeline. JLHZ series are vertical, single-stage, single-suction under-liquid cantilever structure, with rigid shaft design and light weight rotor and high reliability.



Performance Range

Diameter : 300 ~ 1500mm

Flow : 550 ~ 17000m³/h

Head : 2 ~ 8m

Pressure : ~ 1.0MPa

Temperature : ~ 120°C

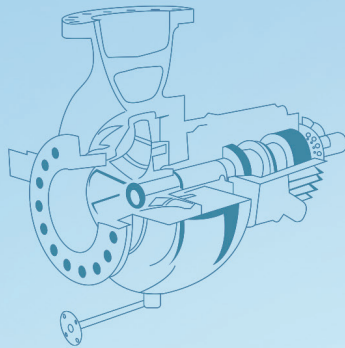
Application

Suitable for transferring corrosive and abrasive slurry media with solids concentration $\leq 60\%$ acidic, neutral and alkaline.

Suitable for conveying solid particle-containing media in large-flow, low-head evaporation cycle stations.

It is applicable to industrial fields such as phosphate compound fertilizer, alumina, non-ferrous metallurgy, chemical industry, alkali production, salt industry, papermaking and light industry.





**Participating in building a better world
with excellent technology and services**

Http: www.jhpumps.com

Tel: 00-86-871-67425766 00-86-871-67413111

E-mail: sales@jhpumps.com

Add: No. 208 Tuoxiang Road, Kunming Area, China (Yunnan) Pilot Free Trade Zone